

Brisbane Boutique Property



17 Solomon Crescent Tingalpa QLD

3  1  2 

OPEN SATURDAY 11:30 to 11:45am.

Situated in a very quiet enclave of Tingalpa is this very cute, very clean low-set brick home, sitting proud on a huge fully fenced corner block, ideal for a small family with young children who need space to play outdoors.

Offering 3 built-in Bedrooms, a 2 way Bathroom, a separate Toilet, a combined Living and Dining room, and a open plan Kitchen Family room that opens out to a great outdoor entertaining space and a yard perfect for the children. New Air Conditioning will be installed.

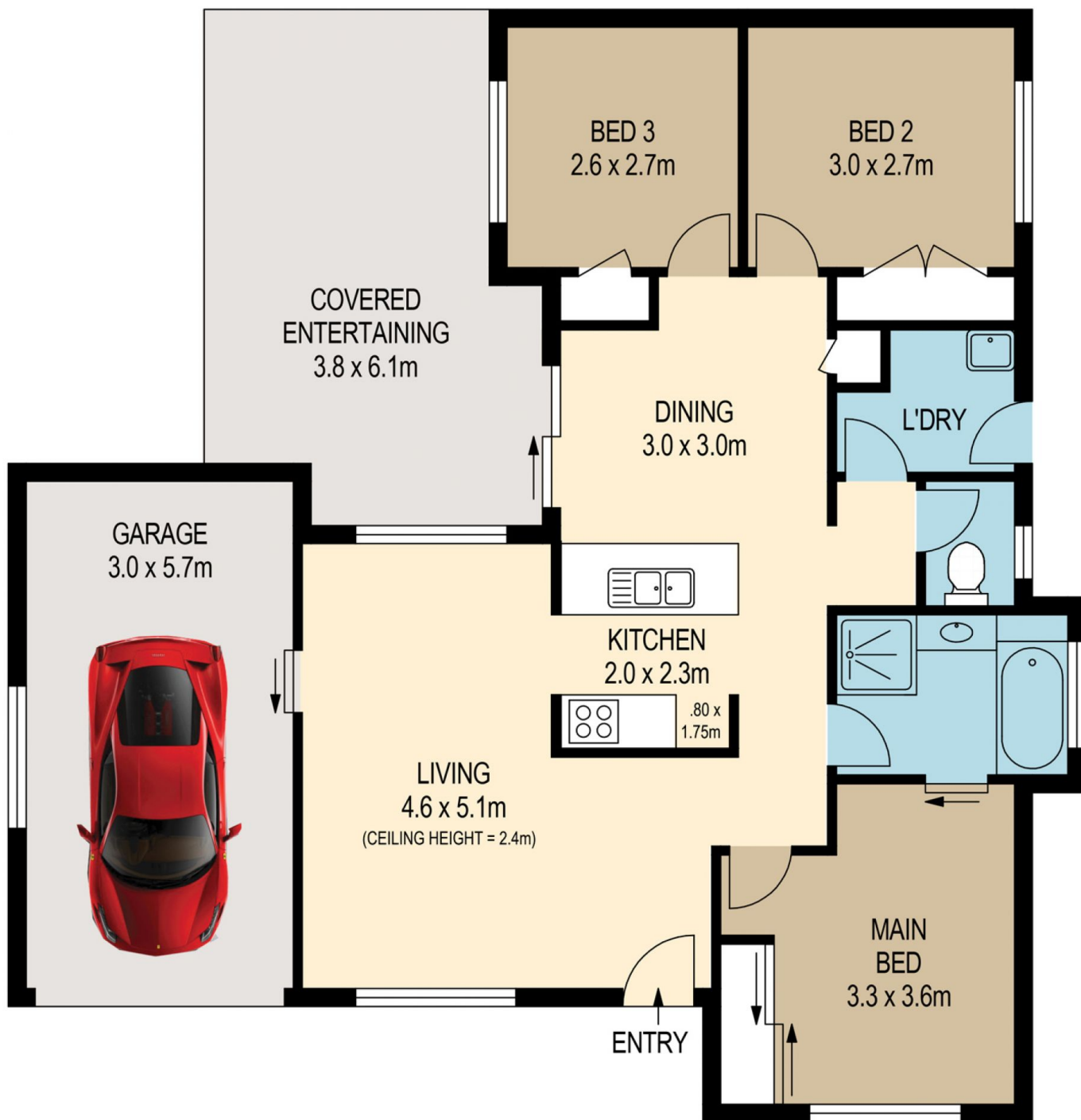
Freshly painted throughout, new carpets throughout, and internal access to the garage. Truly a great space to call

[For full version visit the website](https://www.brisbaneboutique.com/lease/qld/bayside/tingalpa/residential/house/8037699)

Type : House
Building Size : 113 sqm
Land Size : 676 sqm
View : <https://www.brisbaneboutique.com/lease/qld/bayside/tingalpa/residential/house/8037699>



Pelham Marsh
3169 0230



0 1 2 3 4 5
SCALE (METRES)

internal 94sqm
 external 19sqm
 total 113sqm



PLANS SHOWN ONLY INDICATIVE OF LAYOUT. DIMENSIONS ARE APPROXIMATE.

All information contained herein is gathered from sources we believe to be reliable. However we cannot guarantee its accuracy and interested persons should rely on their own enquiries.

17 SOLOMON CRESCENT

Created by RealScope®
www.realscope.com.au