

# Brisbane Boutique Property



2/88 Warilda Street Camp Hill QLD

3  2  2 

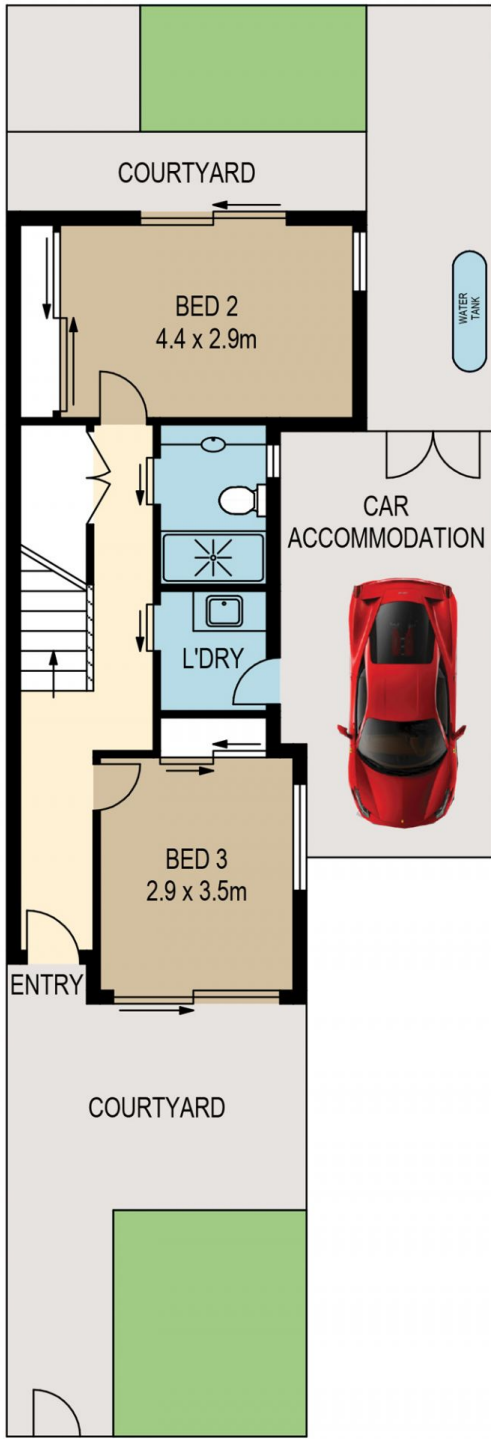
UNDER APPLICATION, NO FURTHER INSPECTIONS AVAILABLE. Very well laid out and situated on the hill in upmarket Warilda Street, Camp Hill. Spread over 3 levels, this home is functional, practical, spacious and contemporary in design. It is a great place to enjoy convenient, fun, low maintenance living, in beautiful, airy accommodation that oozes a comfortable homely atmosphere.

With the master bedroom and ensuite on the top floor, your privacy is assured and will be suited to most professionals looking to rent with friends or relatives. The other two spacious bedrooms are situated on the ground floor, serviced by their own upmarket bathroom. The open plan living, dining and kitchen feature high ceilings and a large covered deck. The kitchen has caesar stone benches and lots of storage with stainless steel Miele appliances and

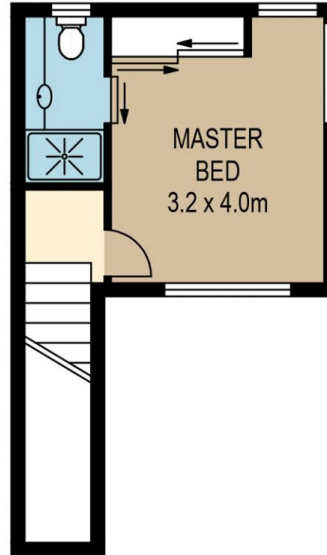
**Building Size** : 112 sqm  
**View** : <https://www.brisbaneboutique.com/lease/qld/southside/camp-hill/residential/townhouse/7937211>



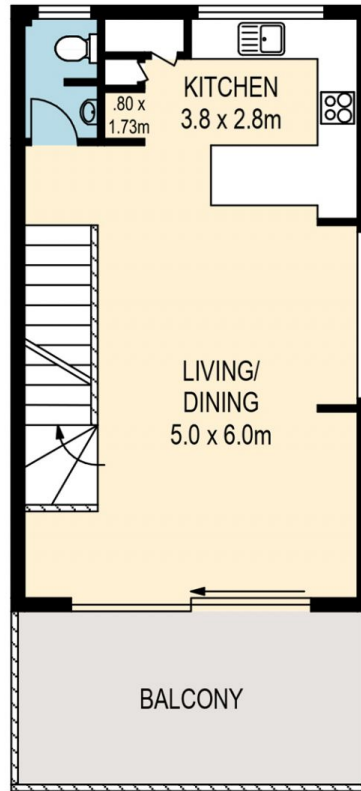
**Pelham Marsh**  
3169 0230



**LOWER LEVEL**



**UPPER LEVEL**



**MIDDLE LEVEL**



PLANS SHOWN ONLY INDICATIVE OF LAYOUT. DIMENSIONS ARE APPROXIMATE.  
 All information contained herein is gathered from sources we believe to be reliable.  
 However we cannot guarantee its accuracy and interested persons should rely on their own enquiries.

	internal	external
lower	47sqm	62sqm
middle	43sqm	13sqm
upper	22sqm	
<b>total</b>	<b>112sqm</b>	<b>75sqm</b>



**2-88 WARILDA STREET**