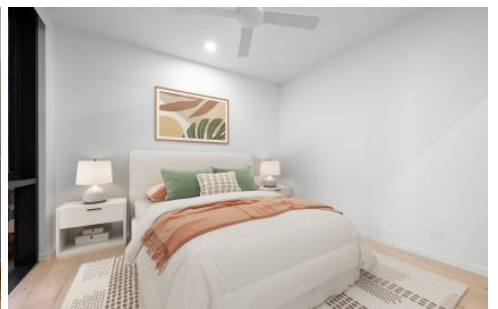


Brisbane Boutique Property



20102/19 Wilson Street West End QLD

2  2  1 

UNDER CONTRACT - This rare offering is designed for the person looking to keep their feet firmly on the ground, yet in a complex that offers amazing facilities and is only a hop skip and a jump from local shopping, and transport.

Perfectly Placed on the Ground floor of Building 2 "Lexington" in the infamous "West Village" sits this gorgeous 2 bedroom, 2 bathroom unit, offering luxurious fixtures and fittings, an study nook, timber floors throughout, and an 14m² courtyard. The artistic design of the facility has Bromley art adorning the halls, foyer's and common area's.

Sitting only 1.5ks from the city, right smack bang in the heart of the beautiful, culturally diverse suburb of West End. West village offers a engaging precinct, intrinsically connected to West End's one of a kind culture, with

Price : \$ 741,500
Building Size : 100 sqm
View : <https://www.brisbaneboutique.com/sale/qld/inner-south/west-end/residential/apartment/7906774>

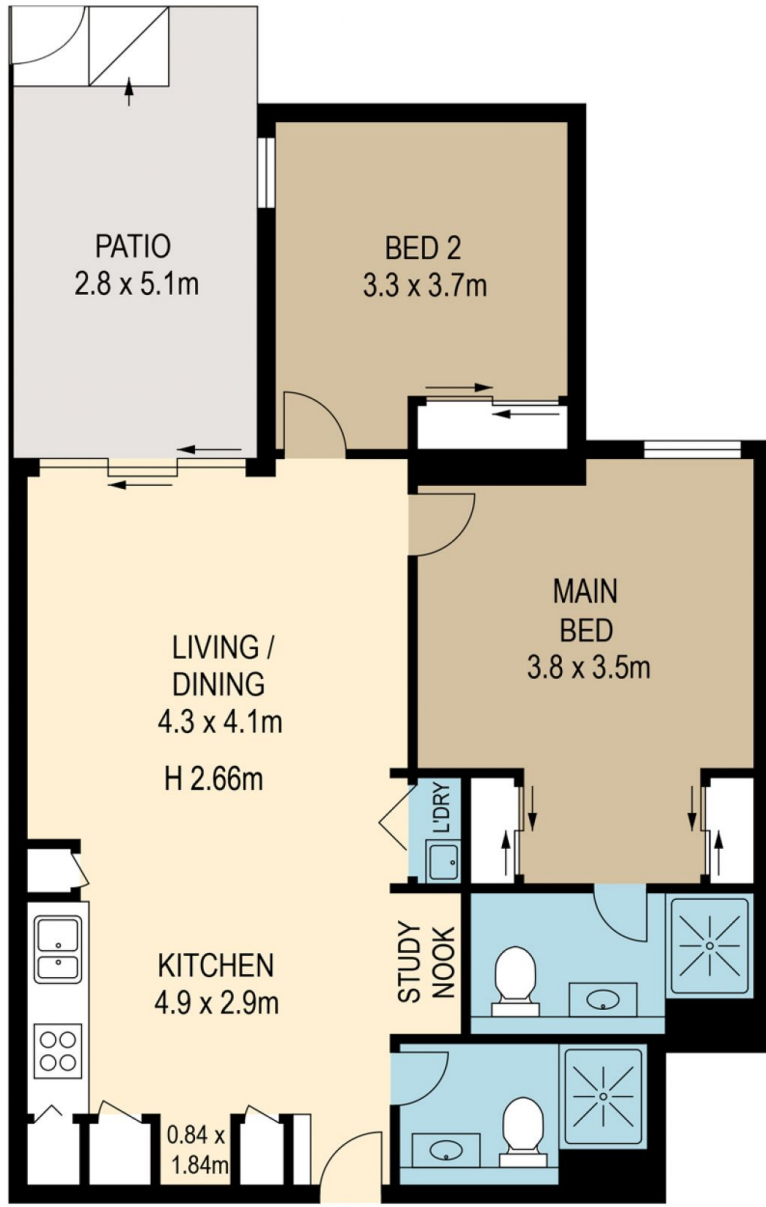


Pelham Marsh
3169 0230



CAR SPACE
2.4 x 4.6m

GARAGE LEVEL



ENTRY

APARTMENT LEVEL



PLANS SHOWN ONLY INDICATIVE OF LAYOUT. DIMENSIONS ARE APPROXIMATE.
All information contained herein is gathered from sources we believe to be reliable.
However we cannot guarantee its accuracy and interested persons should rely on their own enquiries.

apartment	75sqm
patio	14sqm
car space	11sqm
total	100sqm



20102-19 WILSON STREET