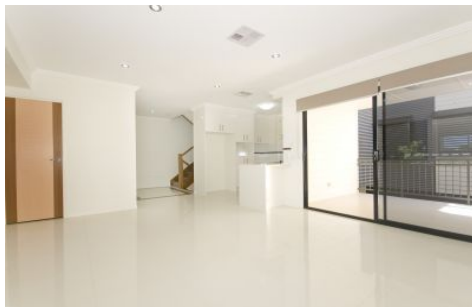


# Brisbane Boutique Property



## 5/575 Vulture Street East Brisbane QLD

3  2  2 

OPEN SATURDAY 12:15 to 12:30 - This contemporary 3 bedroom + study nook townhouse is the ultimate in luxurious inner city living. The location is superb, offering a cosmopolitan lifestyle just three Km from the city. Entertain guests on the large outdoor tiled deck, or head out to nearby cafes, restaurants, bars, pubs and boutiques including the popular Woolloongabba antiques precinct or Coorparoo Sq only a 3 minute drive away. Walk to games at GABBA and go for morning runs along Norman Creek. "Churchie" is also within walking distance. Easy access to the CLEM7 north and Pacific Motorway south is ideal for weekends away on the Sunshine or Gold Coasts. Ideal for an executive couple with fast city buses on nearby Stanley Street, Coorparoo train station less than one Km away, and Mowbray Park ferry terminal less than two Km away.

**Building Size** : 166 sqm  
**View** : <https://www.brisbaneboutique.com/lease/qld/inner-south/east-brisbane/residential/townhouse/7897792>



**Pelham Marsh**  
3169 0230

Spread over three levels, this townhouse makes great use

<https://www.brisbaneboutique.com>



**5/575 VULTURE STREET EAST**

Whilst every attempt has been made to ensure the accuracy of the floorplan contained here, measurements of doors, windows and rooms are approximate and no responsibility is taken for any error omission or mis-statement. These plans are for representation purposes only and should be used as such by any prospective purchaser. The services, systems and appliances listed in this specification have not been tested and no guarantee as to their operating ability or their efficiency can be given

Created by REALSCOPE ©  
[www.realscope.com.au](http://www.realscope.com.au)