




# Brisbane Boutique Property



21305/19 Wilson Street West End QLD

2  2  1 

UNDER APPLICATION - LEASED 23/12/23. Sitting on the 13th floor of Building 1 "Lexington" in the infamous "West Village" sits this gorgeous 2 bedroom, 2 bathroom unit, offering luxurious fixtures and fittings, a 17m<sup>2</sup> balcony, and you can choose with or without car accommodation.

**Building Size** : 112 sqm  
**View** : <https://www.brisbaneboutique.com/lease/qld/inner-south/west-end/residential/apartment/7855056>

The unit has breath taking views across greater Brisbane towards Mount Warning and The Great Dividing Range. the artistic design of the facility has Bromley art adorning the halls, foyer's and common area's.

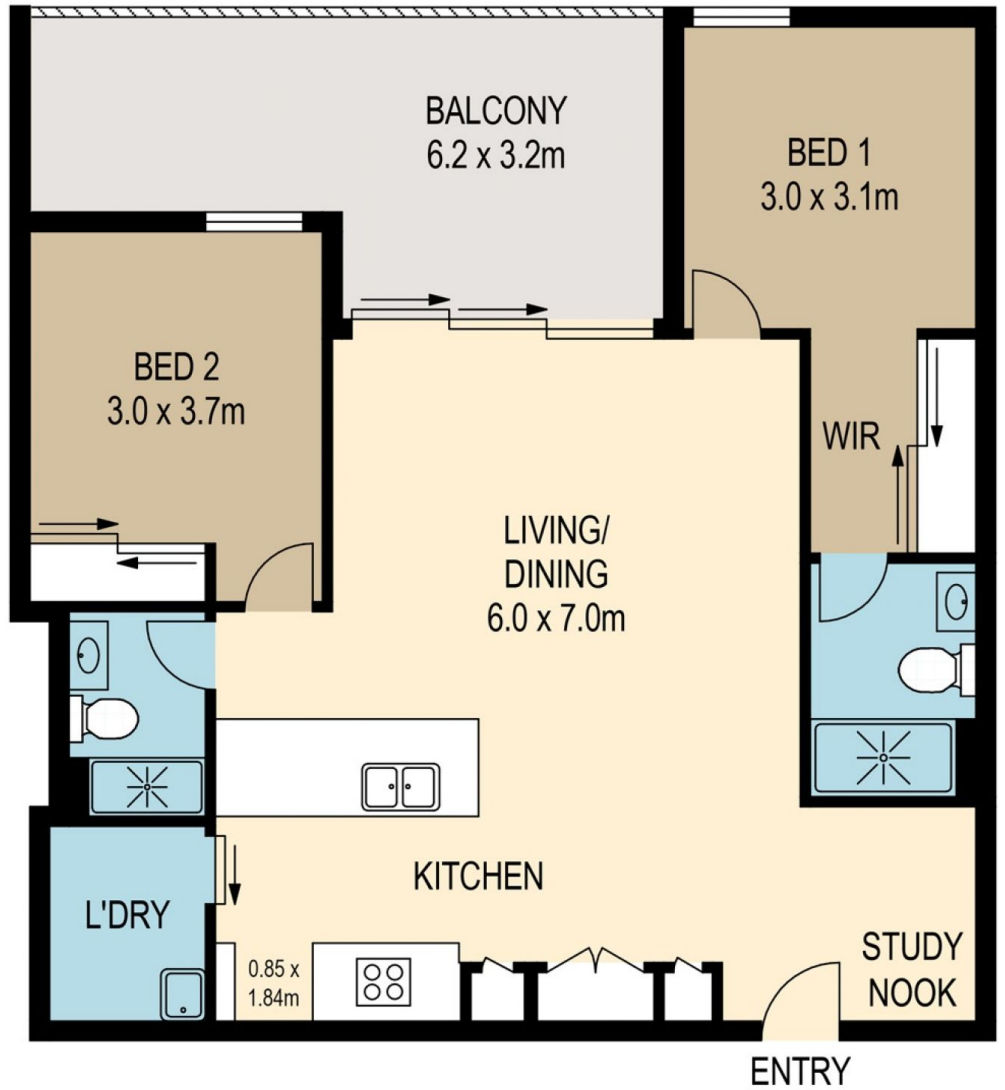
Sitting only 1.5ks from the city, right smack bang in the heart of the beautiful, culturally diverse suburb of West End. West village offers a engaging precinct, intrinsically connected to West End's one of a kind culture, with pedestrian and retail laneways that provide connectivity through West Village and to surrounding streets.



**Pelham Marsh**  
3169 0230



**GARAGE LEVEL**



**APARTMENT LEVEL**



SCALE (METRES)

PLANS SHOWN ONLY INDICATIVE OF LAYOUT. DIMENSIONS ARE APPROXIMATE.

All information contained herein is gathered from sources we believe to be reliable. However we cannot guarantee its accuracy and interested persons should rely on their own enquiries.

internal	81sqm
balcony	17sqm
garage	14sqm
total	112sqm



**21305-19 WILSON STREET**