

Brisbane Boutique Property



6/45 Woodhill Avenue Coorparoo QLD

2  1  2 

UNDER APPLICATION, NO FURTHER INSPECTIONS AVAILABLE - This absolutely beautiful 2 bedroom, 1 bathroom, 2 (small car) lock up garage unit sits high on the top floor of this block of 6 units. A brilliant quite position with outstanding views to the east from the full width balcony.

Luxuriously appointed this home offers a spacious air conditioned combine living and dining space, a well laid out stone top, beautifully fitted Kitchen with European appliances and lots of storage, a tastefully designed bathroom with dual vanities, large shower and separate toilet, two large bedrooms both with built in robes, ceiling fans, and plantation shutters for privacy. Being on the top floor this unit enjoys breath taking views, great breezes and benefits from light filled rooms all year round.

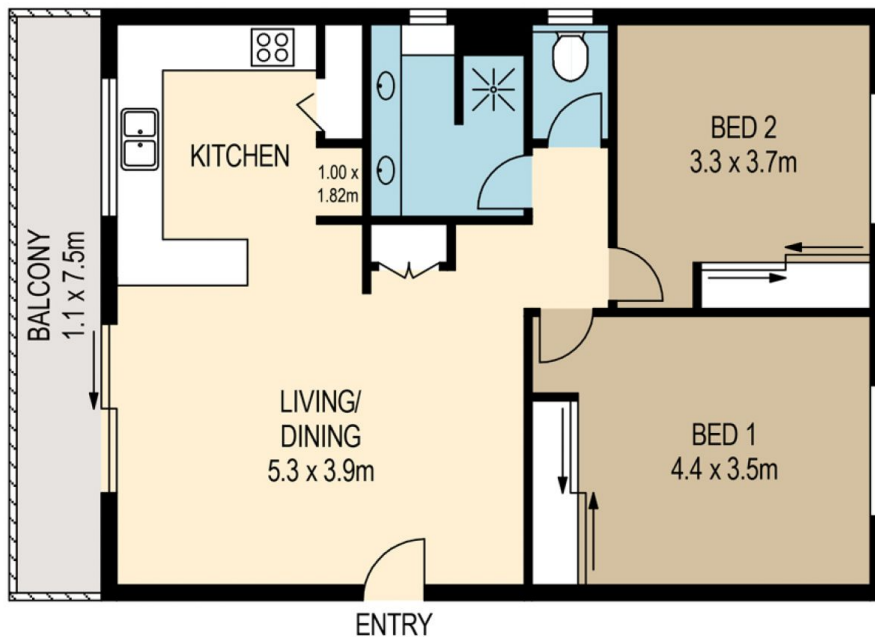
Building Size : 119 sqm
View : <https://www.brisbaneboutique.com/lease/qld/southside/coorparoo/residential/unit/7814060>



Pelham Marsh
3169 0230



GARAGE LEVEL



APARTMENT LEVEL



PLANS SHOWN ONLY INDICATIVE OF LAYOUT. DIMENSIONS ARE APPROXIMATE.

All information contained herein is gathered from sources we believe to be reliable. However we cannot guarantee its accuracy and interested persons should rely on their own enquiries.

internal	74sqm
balcony	9sqm
garage	36sqm
total	119sqm



6-45 WOODHILL AVENUE