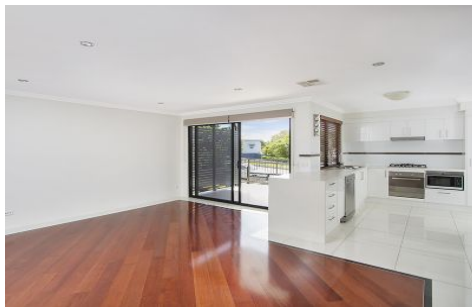


Brisbane Boutique Property



3/575 Vulture Street East East Brisbane QLD

3 2 2

UNDER CONTRACT

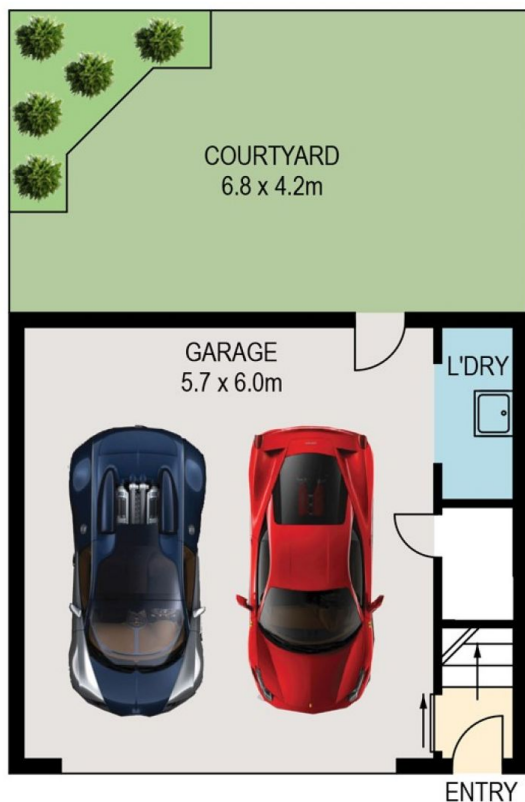
An exciting opportunity for a contemporary townhouse with the ultimate in inner city living lifestyle. Its central location offers a cosmopolitan lifestyle sitting just three km from the city. A hop, skip and a jump to nearby cafes', restaurants, bars, pubs and boutiques, including the popular Coorparoo SQ dining, cinema and supermarket shopping precinct.

Walk to games at the GABBA and go for morning runs along Norman Creek. Anglican Church Grammar School "Churchie" is also within walking distance. Easy access to the CLEM7 north and Pacific Motorway south is ideal for weekends away on the Sunshine or Gold Coasts. Ideal for an executive couple with fast city buses 50mtrs from your front door, Coorparoo train station 600mtrs away, and Mowbray Park ferry terminal less than 1.1 km away.

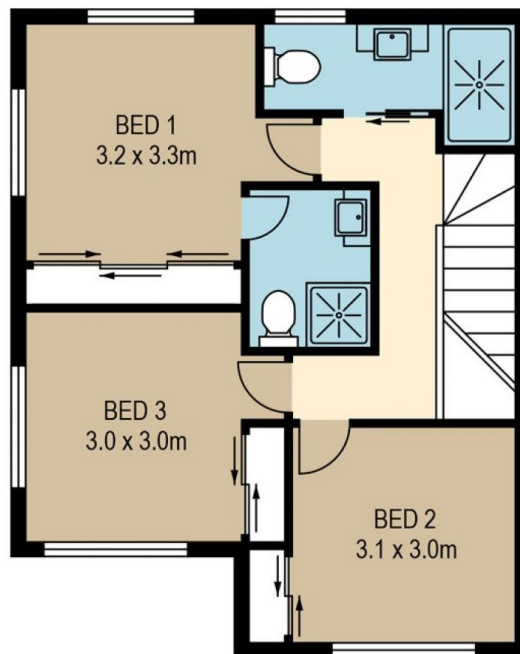
Price : \$ 890,000
Building Size : 174 sqm
View : <https://www.brisbaneboutique.com/sale/qld/inner-south/east-brisbane/residential/townhouse/7796853>



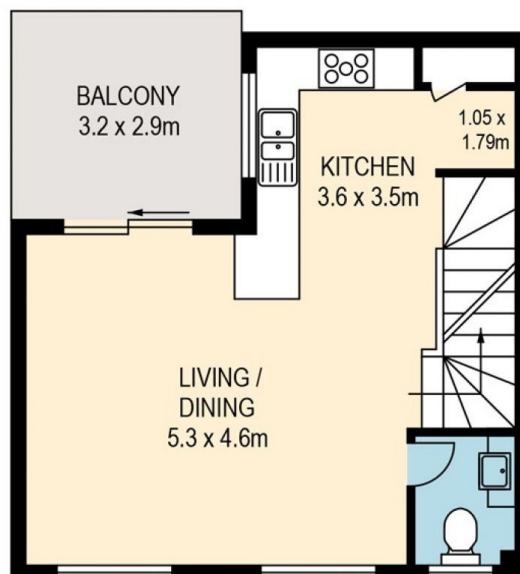
Pelham Marsh
3169 0230



LOWER LEVEL



UPPER LEVEL



MIDDLE LEVEL



PLANS SHOWN ONLY INDICATIVE OF LAYOUT. DIMENSIONS ARE APPROXIMATE.
All information contained herein is gathered from sources we believe to be reliable.
However we cannot guarantee its accuracy and interested persons should rely on their own enquiries.

internal 136sqm
external 38sqm
total 174sqm



3-575 VULTURE STREET

Created by RealScope©
www.realscope.com.au