

# Brisbane Boutique Property



**3/43 Robinson Street Coorparoo QLD**

4 2 2

UNDER APPLICATION - Situated just a few minutes stroll from Coorparoo Central and the New Coorparoo Sq precinct, Including Cinemas, a myriad of Cafes, the 3 Major Supermarkets, Doctors, Pharmacies and Hair Dressers, Beauticians, The South East Busway and Coorparoo Train Station.

**Building Size** : 141 sqm  
**View** : <https://www.brisbaneboutique.com/lease/qld/southside/coorparoo/residential/house/7438074>

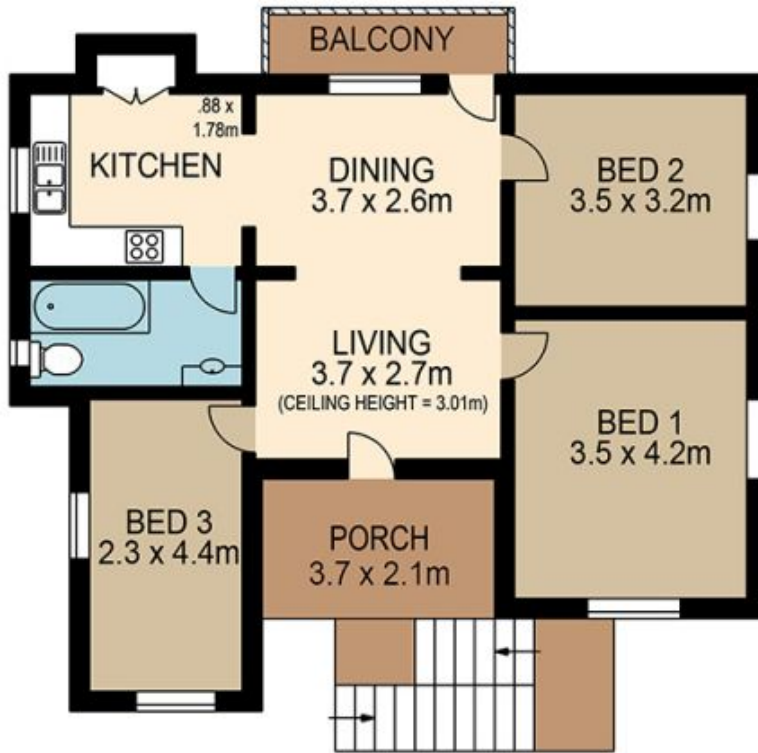
This beautiful Queenslander offers 3 bedrooms, 2 bathrooms and a separate Multi Purpose with its own bathroom, ideal for a teenager or and elderly parent.



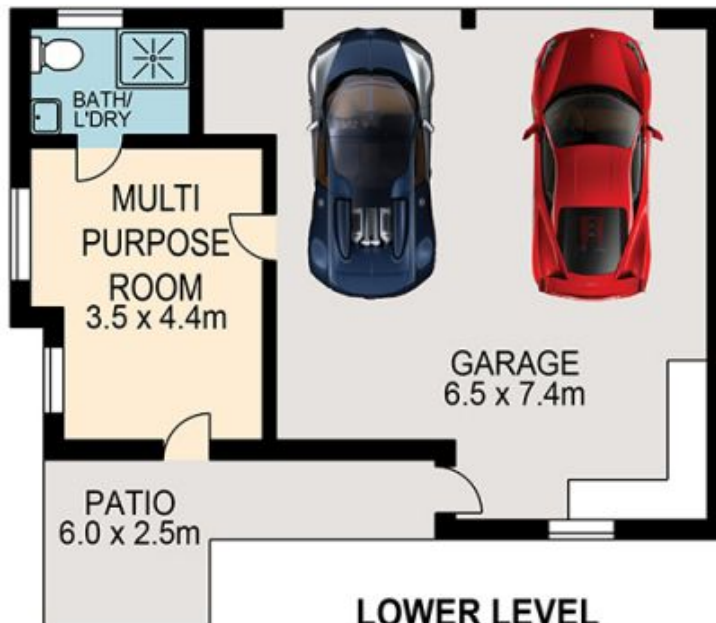
**Pelham Marsh**  
3169 0230

Featuring polished timber floors right through the upstairs, high ceilings as you would expect from home of this era, a renovated bathroom, a big kitchen, air conditioning in the living room, a big double lock up garage, and a brilliant outdoor entertaining area at the front with a small yard for the kids to play. Yard maintenance is included. PLEASE

<https://www.brisbaneboutique.com>



**UPPER LEVEL**



**LOWER LEVEL**



PLANS SHOWN ONLY INDICATIVE OF LAYOUT. DIMENSIONS ARE APPROXIMATE.

All information contained herein is gathered from sources we believe to be reliable. However we cannot guarantee its accuracy and interested persons should rely on their own enquiries.

	internal	external
lower	66sqm	10sqm
upper	75sqm	18sqm
<b>total</b>	<b>141sqm</b>	<b>28sqm</b>



**3-43 ROBINSON STREET**

Created by RealScope®  
www.realscope.com.au