



58 Martha Street Camp Hill QLD

9 5 5

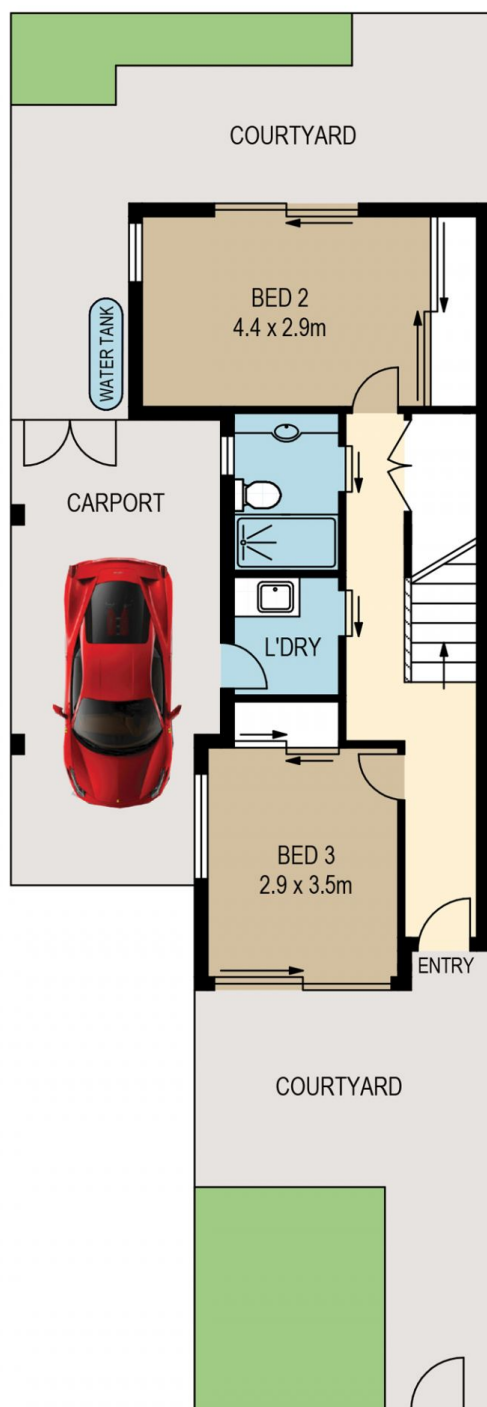
UNDER CONTRACT - The Owner of this has enjoyed 9+ Years of fantastic yields, its time to pass it onto someone else. A truly rare opportunity to purchase 3 amazing investment properties all on one title. Freshly painted and a very clever eclectic design offering a beautiful 1930s low set cavity brick, 3 bedroom character home. As well, two nearly 10 year old, 3 story, 3 bedroom modern spacious townhouses, all on 703m2 in very desirable Martha Street. All currently rented with a return of \$1875 per week. Motivated Sellers give clear instructions "This must be sold".

The front house is designed with a smooth meld of old and new, just a beautifully presented home offering high end fixtures and fittings. In the kitchen an integrated fridge and induction cook top, granite benches and loads of cupboard space with a great size back deck. A reliable renter at \$675

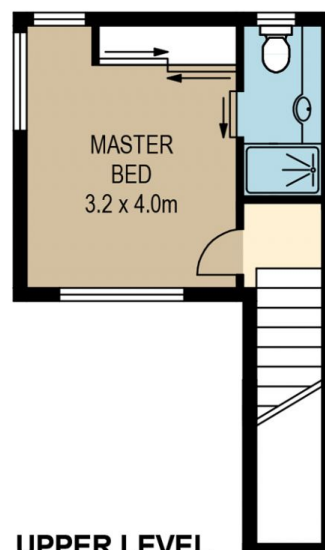
Price : \$ 2,125,000
Land Size : 703 sqm
View : <https://www.brisbaneboutique.com/sale/qld/southside/camp-hill/residential/house/6631715>



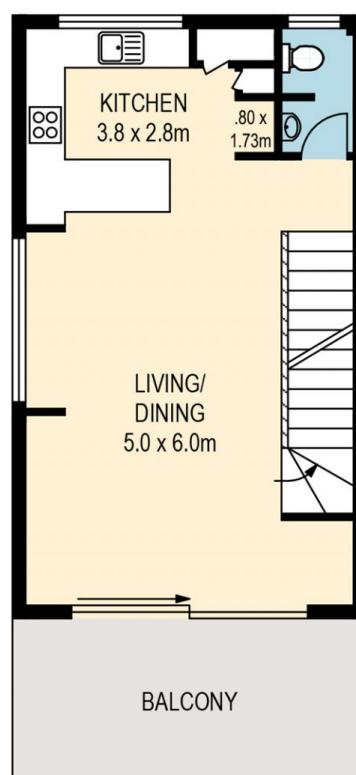
Pelham Marsh
3169 0230



LOWER LEVEL



UPPER LEVEL



MIDDLE LEVEL



PLANS SHOWN ONLY INDICATIVE OF LAYOUT. DIMENSIONS ARE APPROXIMATE.

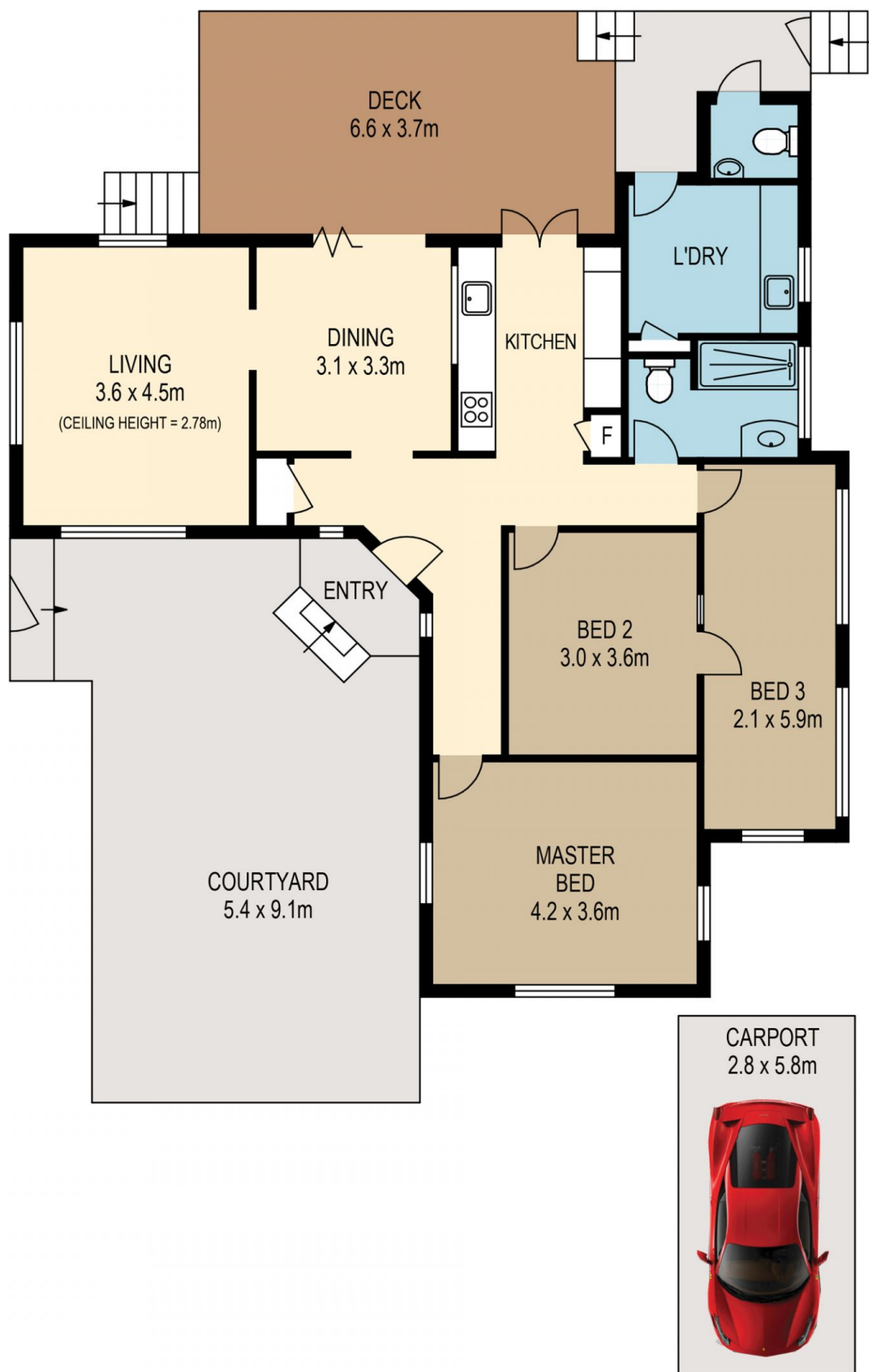
All information contained herein is gathered from sources we believe to be reliable. However we cannot guarantee its accuracy and interested persons should rely on their own enquiries.

	internal	external
lower	47sqm	64sqm
middle	43sqm	13sqm
upper	22sqm	
total	112sqm	77sqm



1-88 WARILDA STREET

Created by RealScope®
www.realscope.com.au



SCALE (METRES)

PLANS SHOWN ONLY INDICATIVE OF LAYOUT. DIMENSIONS ARE APPROXIMATE.

All information contained herein is gathered from sources we believe to be reliable.
However we cannot guarantee its accuracy and interested persons should rely on their own enquiries.

internal	external
103sqm	96sqm



58 MARTHA STREET

Created by RealScope®
www.realscope.com.au