

Brisbane Boutique Property



1/42 Wellington Street Coorparoo QLD

2  1  1 

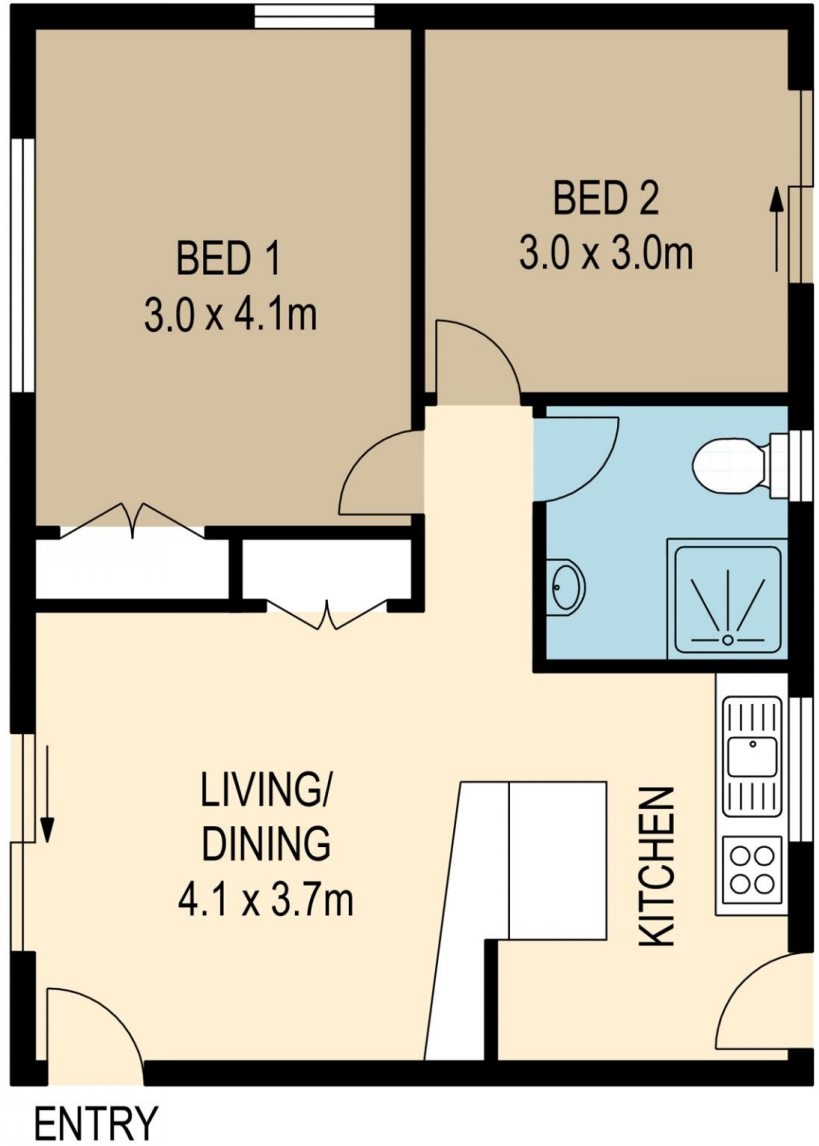
This cute and cosy 2 bedroom unit is an ideal centrally located unit. sitting just a 5 minute walk from Coorparoo central's famous landmark Coorparoo SQ, with its shops and cinemas and restaurants all a short stroll from home. On the cheaper end of the scale this unit is situated at the rear of a small block of units and is on the ground floor. 2 decent size bedrooms, separate living and kitchen. with back door access to the yard.

View : <https://www.brisbaneboutique.com/lease/qld/southside/coorparoo/residential/apartment/6442529>

Please register your intention to inspect via phone 0413700075 or email pelham@brisbaneboutique.com



**Pelham Marsh
3169 0230**



SCALE (METRES)

PLANS SHOWN ONLY INDICATIVE OF LAYOUT. DIMENSIONS ARE APPROXIMATE.

All information contained herein is gathered from sources we believe to be reliable. However we cannot guarantee its accuracy and interested persons should rely on their own enquiries.

internal
71sqm



1-42 WELLINGTON STREET

Created by RealScope®
www.realscope.com.au