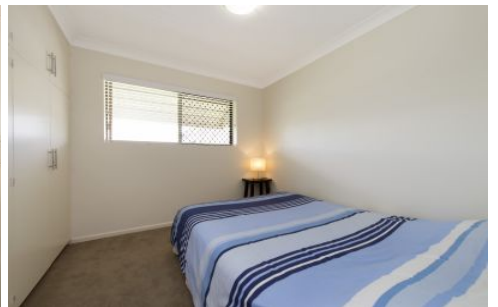


Brisbane Boutique Property



2/28 Weston Street Coorparoo QLD

2  1  1 

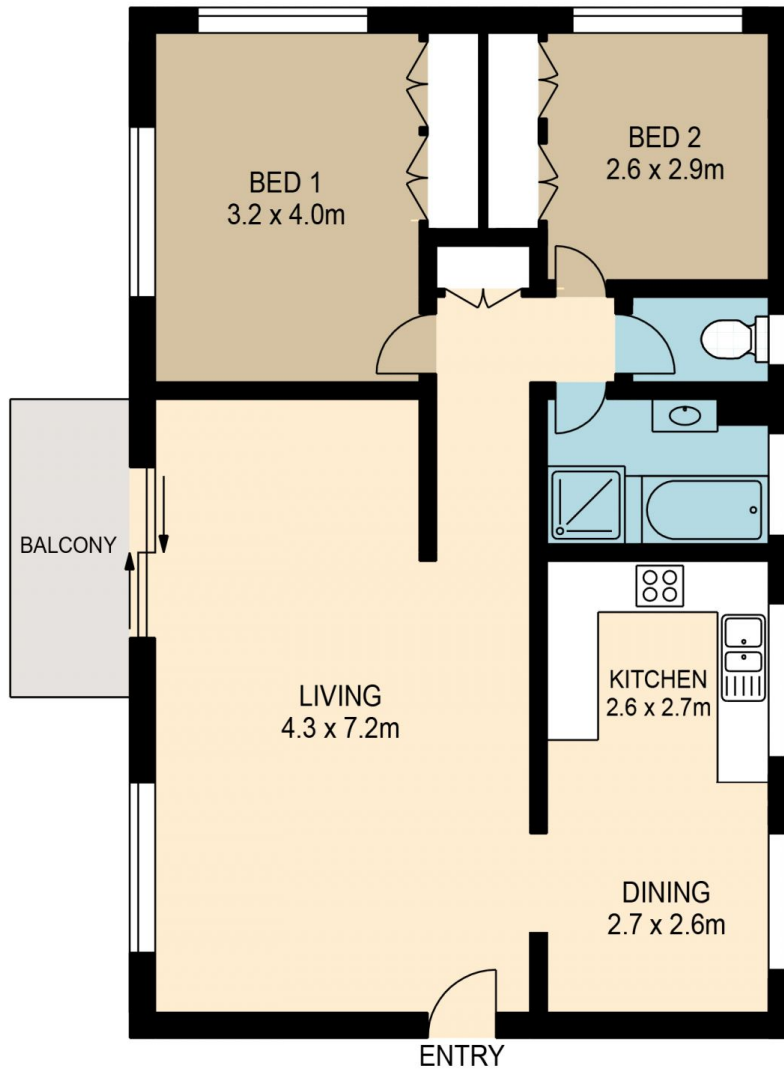
UNDER APPLICATION - PLEASE CONFIRM YOUR INTENTION TO ATTEND THE OPEN INSPECTION BY EITHER EMAIL OR TEXT TO 0413700075. Arriving from a hard day's work you will feel right at home in your big first floor two bedroom unit sitting right in the heart of Coorparoo. Very spacious and practical, this unit offers a relaxing homely feel. With a beautiful big kitchen that feels large and offers copious amounts of storage and lots of bench space, there's simply nothing to do except move in and enjoy.

On entry you will be greeted by the massive living area with a separate kitchen and dining room. With plush high end carpet throughout, a powerful 7.6kw air conditioner to ensure comfort all year round. The bathroom has been modernised and offers a separate bath, new shower screen, basin and vanity cupboard, and a separate toilet.

Building Size : 108 sqm
Land Size : 811 sqm
View : <https://www.brisbaneboutique.com/lease/qld/southside/coorparoo/residential/unit/6370338>



Pelham Marsh
3169 0230



UPPER LEVEL



LOWER LEVEL



PLANS SHOWN ONLY INDICATIVE OF LAYOUT. DIMENSIONS ARE APPROXIMATE.

All information contained herein is gathered from sources we believe to be reliable. However we cannot guarantee its accuracy and interested persons should rely on their own enquiries.

	internal	external
lower	21sqm	
upper	82sqm	5sqm
total	103sqm	5sqm



2-28 WESTON STREET

Created by RealScope®
www.realscope.com.au