



1/22 Renton Street Camp Hill QLD

3 2 2

UNDER APPLICATION - Sitting in a small complex of only 3 - Beautifully appointed and featuring 3 generous bedrooms all with built in robes with the master bedroom, 2nd bedroom and the living room being air-conditioned, Spacious open plan living room and a second living room open the top floor, Caesar stone top kitchen with European "Ariston" appliances, 2 bathrooms including Ensuite, 3 toilets, and full crimsafe screens to all windows and sliding doors.

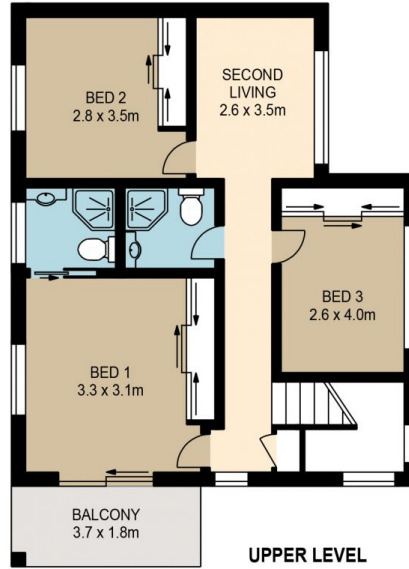
Quite unique in design, A good size courtyard that is designed to be easily maintained. Very convenient position.

Situated just 3 minutes' walk from the major transport corridor "Southeast Busway", 6 minutes to Westfield's Carindale Shopping Village, and 2 minutes to Carina Central. Be the first to inspect these one year old

View : <https://www.brisbaneboutique.com/lease/qld/southside/camp-hill/residential/townhouse/6262792>



Pelham Marsh
3169 0230



LOWER LEVEL

UPPER LEVEL

PLANS SHOWN ONLY INDICATIVE OF LAYOUT. DIMENSIONS ARE APPROXIMATE

All information contained herein is gathered from sources we believe to be reliable. However we cannot guarantee its accuracy and interested persons should rely on their own enquiries.

	internal	external
lower	70sqm	6sqm
upper	66sqm	7sqm
total	136sqm	13sqm



UNIT 1/22 RENTON STREET

Created by RealScope®
www.realscope.com.au