




# Brisbane Boutique Property



**2/32 Mansfield Street Coorparoo QLD**

**2**  **1**  **1** 

UNDER APPLICATION - Beautifully laid out this well presented cavity brick 2 bedroom unit is well placed in Coorparoo Central with easy walking distance from buses, supermarkets, cafes, restaurants, boutiques and medical facilities.

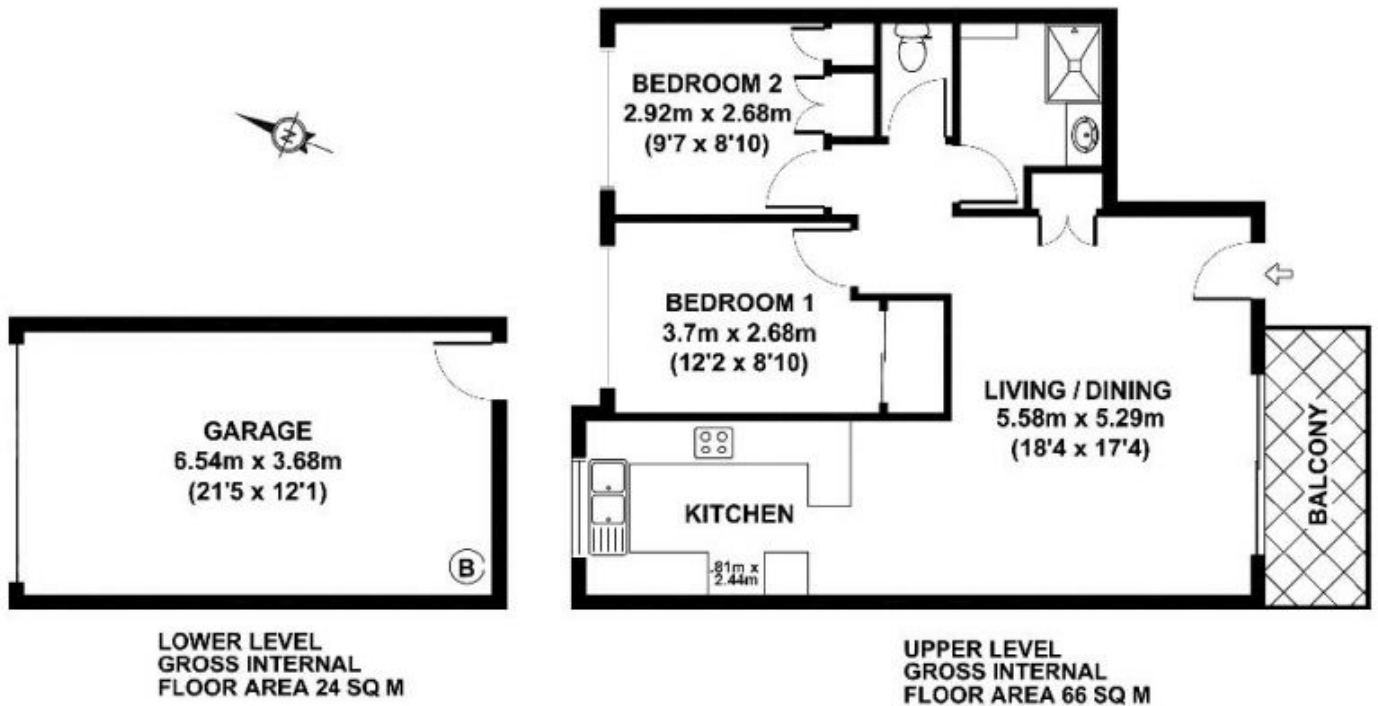
2 bedrooms both with built-in robes large lounge and dining area, Renovated kitchen and bathroom and a single lock up garage with internal access.

On the second floor with glass balustrade on the verandah, carpeted bedrooms and timber look flooring to the living and kitchen areas. Intercom Security access to the entry and spacious in design. An excellent unit for the convenience orientated that would like a nice place to live. Inspections By Appointment only at this stage please. Small Pet considered.

**Building Size** : 80 sqm  
**View** : <https://www.brisbaneboutique.com/lease/qld/southside/coorparoo/residential/unit/6262785>



**Pelham Marsh**  
**3169 0230**



**2-32 MANSFIELD STREET**

**APPROX. GROSS INTERNAL FLOOR AREA 90 SQ M / 969 SQ FT**  
**APPROX. FLOOR AREA INCLUDING EXTERNAL AREAS 95 SQ M / 1023 SQ FT**

Whilst every attempt has been made to ensure the accuracy of the floorplan contained here, measurements of doors, windows and rooms are approximate and no responsibility is taken for any error omission or mis-statement. These plans are for representation purposes only and should be used as such by any prospective purchaser. The services, systems and appliances listed in this specification have not been tested and no guarantee as to their operating ability or their efficiency can be given

Created by REALSCOPE ©  
[www.realscope.com.au](http://www.realscope.com.au)