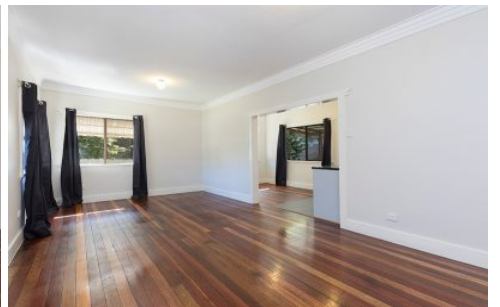


Brisbane Boutique Property



26 Lauder Street Mount Gravatt East QLD

2 1 1

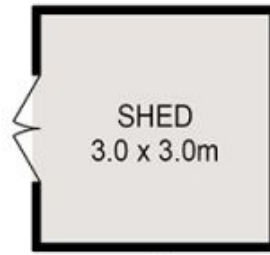
UNDER APPLICATION - A good clean spacious 2 bedroom home (Both bedrooms air- conditioned) offering a great yard for kids, a near new kitchen with near new appliances, polished hardwood floors and a big bathroom (No Bath). The home is well laid out with a combined Kitchen/Dinning room and a huge lounge room. Under cover car accommodation for 1 and a covered back patio for entertaining. The laundry is huge and would easily house a chest freezer and a 2nd fridge, see the floorplan. The back yard is fully fenced.

If your after a good clean home in a great location then come the to open home, please register your intention to inspect on Saturday. Pets Considered on Application.

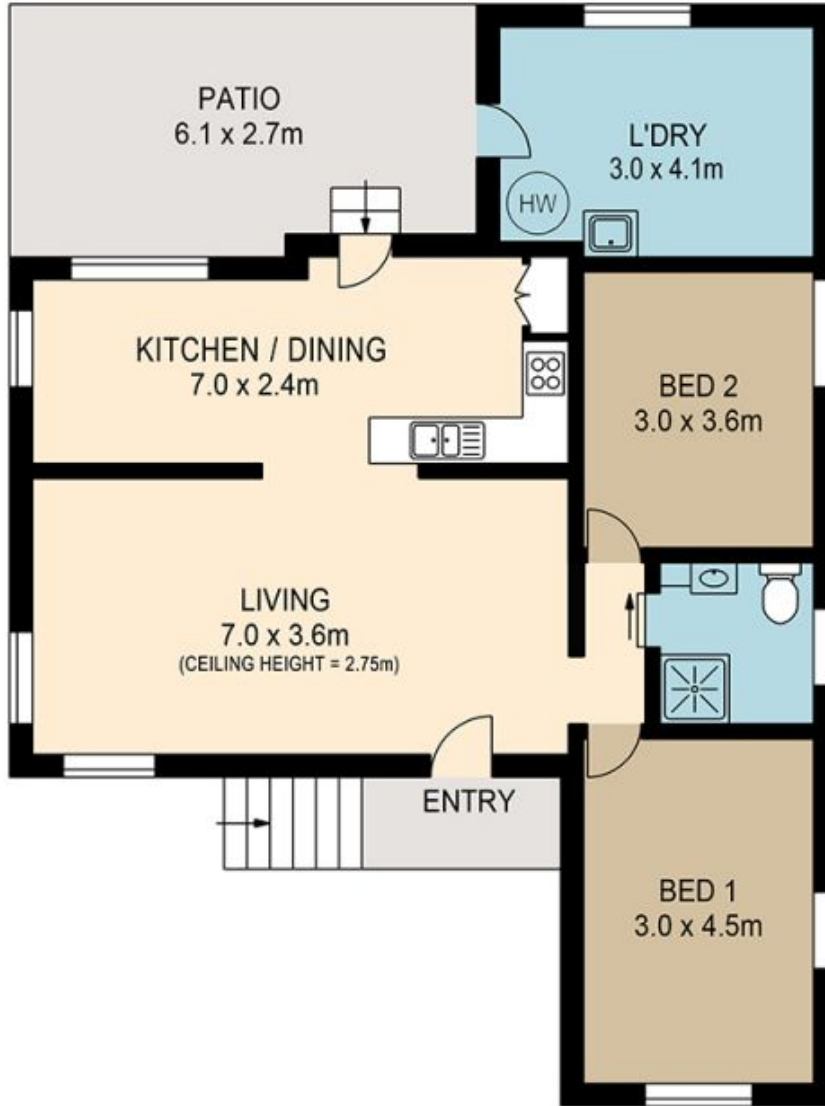
Building Size : 132 sqm
View : <https://www.brisbaneboutique.com/lease/qld/southside/mount-gravatt-east/residential/house/6262781>



Pelham Marsh
3169 0230



↑
DISTANCE NOT TO SCALE
↓



UPPER LEVEL

LOWER LEVEL



PLANS SHOWN ONLY INDICATIVE OF LAYOUT. DIMENSIONS ARE APPROXIMATE.

All information contained herein is gathered from sources we believe to be reliable. However we cannot guarantee its accuracy and interested persons should rely on their own enquiries.

	internal	external
lower	9sqm	13sqm
upper	90sqm	20sqm
total	99sqm	33sqm



26 LAUDER STREET

Created by RealScope®
www.realscope.com.au