



44 Wellington Street Coorparoo QLD

3 1 2

UNDER APPLICATION - This beautiful Queenslander situated in the heart of Coorparoo is just a 5 min walk to public transport and a myriad of shopping centres, cafes, restaurants, fast food outlets and medical facilities.

This home is tidy and clean, it has a copious amount of fully concreted dry storage under the home, is carpeted right through, has the 11 foot ceiling height you would expect of a home this age. Featuring an updated Kitchen, a combined lounge and dining room, 2 large bedrooms and one small bedroom, and a sleep-out that would be an ideal second living room or gym/ hobby room.

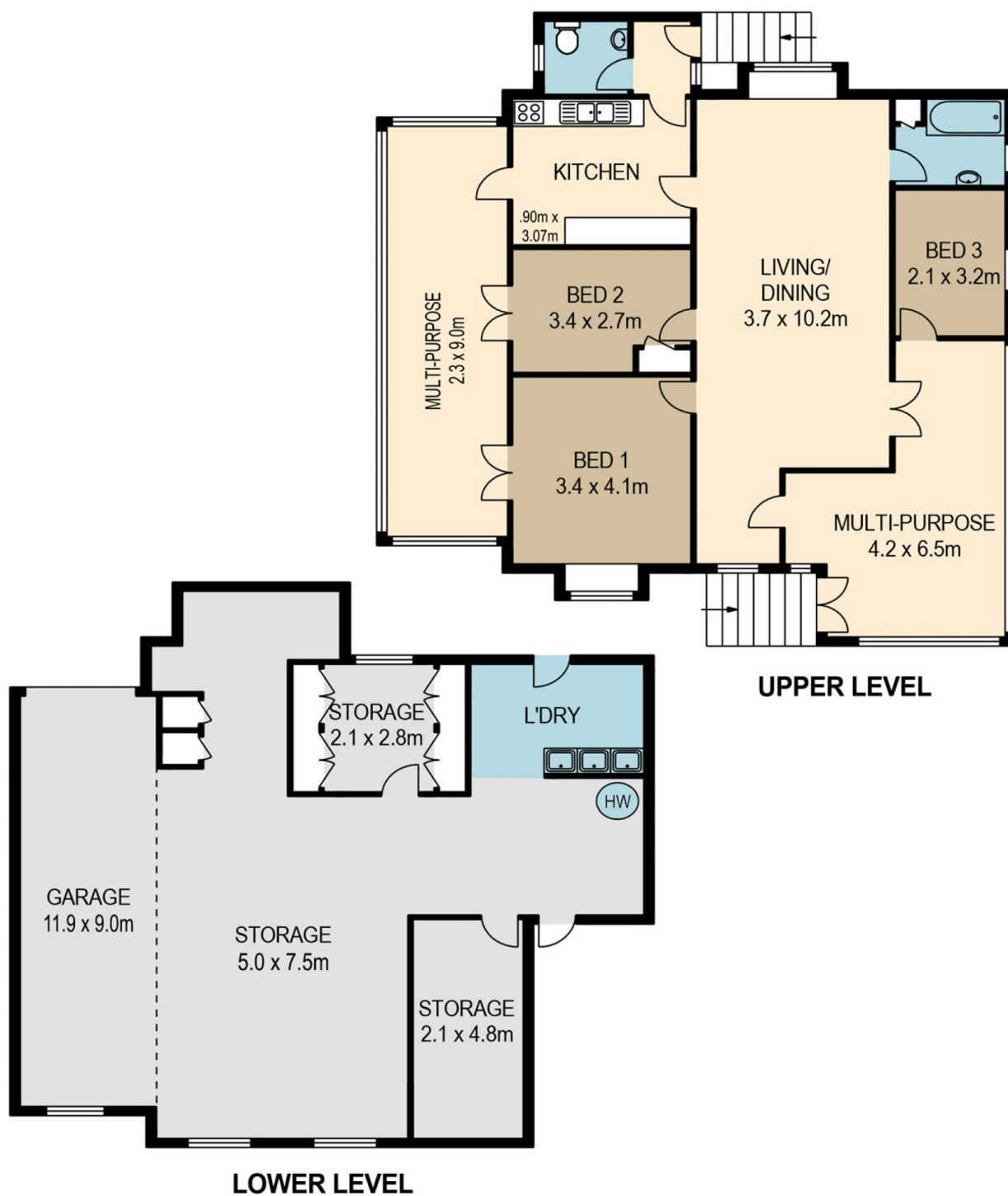
We are seeking someone that will take care of this old beauty, someone who loves old homes, someone that can continue with this old homes legacy and be apart of her history. Please note we will only be accepting cats, birds or

Land Size : 744 sqm

View : <https://www.brisbaneboutique.com/lease/qld/southside/coorparoo/residential/house/6262778>



Pelham Marsh
3169 0230



PLANS SHOWN ONLY INDICATIVE OF LAYOUT. DIMENSIONS ARE APPROXIMATE.

All information contained herein is gathered from sources we believe to be reliable. However we cannot guarantee its accuracy and interested persons should rely on their own enquiries.

	internal
lower	114sqm
upper	130sqm
total	244sqm



44 WELLINGTON STREET

Created by RealScope®
www.realscope.com.au