




Brisbane Boutique Property



38 Mayrene Street Carina QLD

3  1  3 

Leased - A cute and cosy low set home situated in a quiet street, sitting just 5 mins from Carindale shopping, a myriad of cafes and restaurants, convenience stores and public transport to the city.

Freshly painted inside and polished hardwood timber floors throughout, offering 3 bedrooms, 1 bathroom, a separate toilet, a big living room, a combined kitchen and dining that open directly onto the biggest residential deck I've seen.

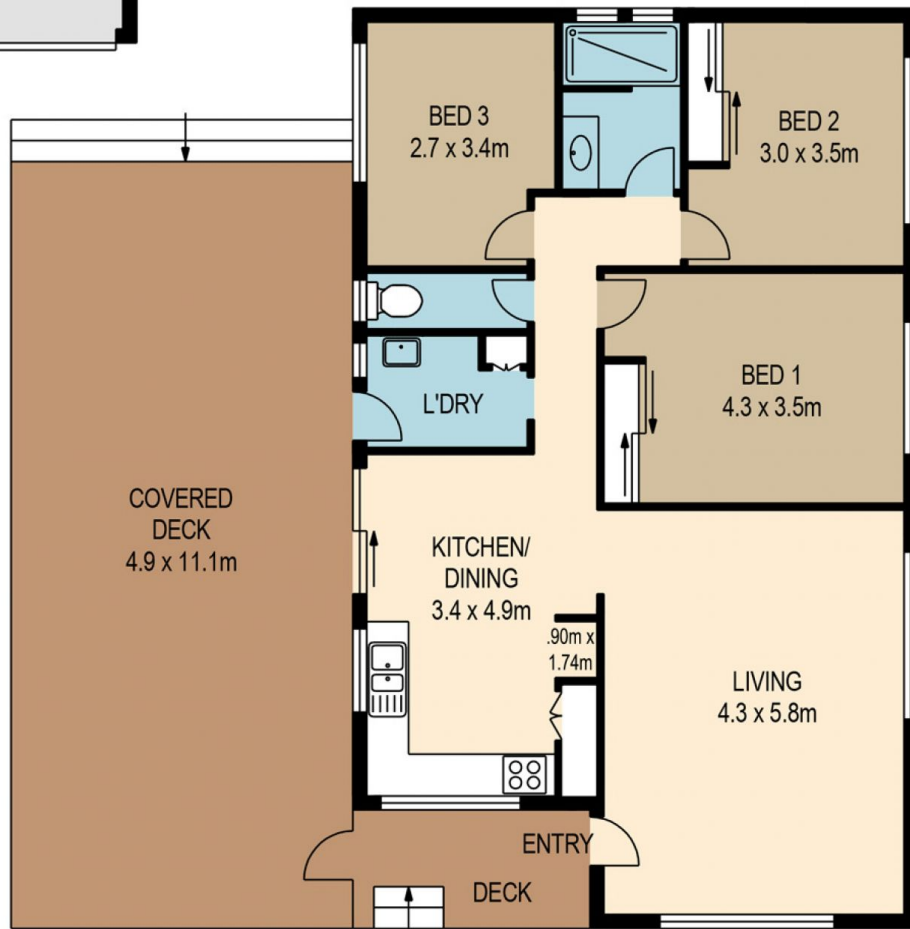
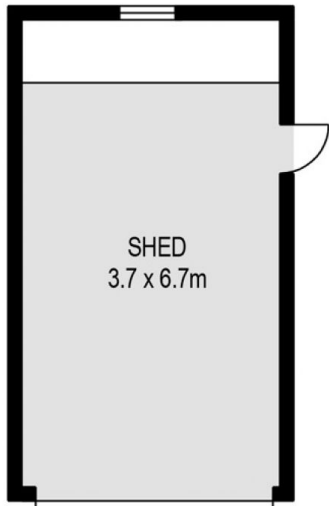
A tasteful and modern kitchen, an ultra modern bathroom, air con in two of the bedrooms and the main living area.

To top off this home there is a big shed and room for 2 cars on the driveway, and with side access you can also drive boats or other adult toys in to the yard. The huge yard will be great for young children.

Building Size : 120 sqm
Land Size : 607 sqm
View : <https://www.brisbaneboutique.com/lease/qld/southside/carina/residential/house/6262777>



Pelham Marsh
3169 0230



PLANS SHOWN ONLY INDICATIVE OF LAYOUT. DIMENSIONS ARE APPROXIMATE.

All information contained herein is gathered from sources we believe to be reliable. However we cannot guarantee its accuracy and interested persons should rely on their own enquiries.

internal	external
120sqm	60sqm



38 MAYRENE STREET

Created by RealScope®
www.realscope.com.au