



62 Celia Street Ashgrove QLD

3 2 3

UNDER APPLICATION - OPEN HOME CANCELLED

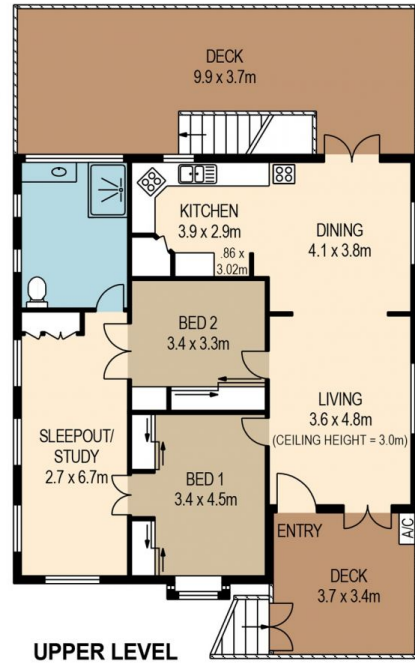
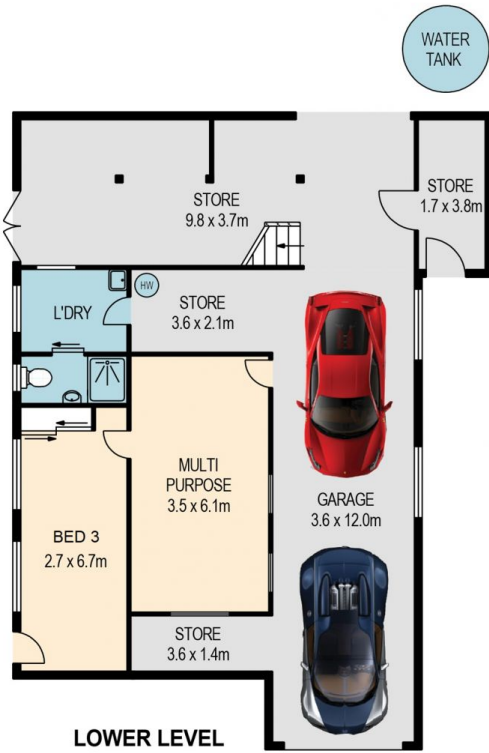
PLEASE NOTE DUE TO COVID-19 SOCIAL DISTANCING REGULATIONS WE CAN ONLY ALLOW 10 PEOPLE AT A TIME DURING THE OPEN INSPECTION. SHOULD THERE BE A REQUIREMENT, WE WILL EXTEND THE TIME WE ARE OPEN TO ENSURE ALL ATTENDEES HAVE SUFFICIENT TIME TO INSPECT THE HOME. PLEASE EMAIL OR TEXT 0413700075 TO REGISTER YOUR INTENTION TO INSPECT.

Sitting in the heart of Ashgrove sits this freshly painted, nearly 100 year old home. With its polished honey coloured pine floors, its soaring ceilings, and the Queenslander features a home of this era offers, you will absolutely love living here.

Building Size : 301 sqm
Land Size : 607 sqm
View : <https://www.brisbaneboutique.com/lease/qld/city-north/ashgrove/residential/house/6262775>



Pelham Marsh
3169 0230



PLANS SHOWN ONLY INDICATIVE OF LAYOUT. DIMENSIONS ARE APPROXIMATE.
 All information contained herein is gathered from sources we believe to be reliable.
 However we cannot guarantee its accuracy and interested persons should rely on their own enquiries.

	internal	external
lower	153sqm	
upper	98sqm	50sqm
total	251sqm	50sqm



62 CELIA STREET

Created by RealScope®
www.realscope.com.au