

4 Fishermans Bend Balmoral QLD

4 2 4

Situated in a quiet Balmoral Cul-de-sac Street this home offers a serene lifestyle in a sprawling low-set split level home.

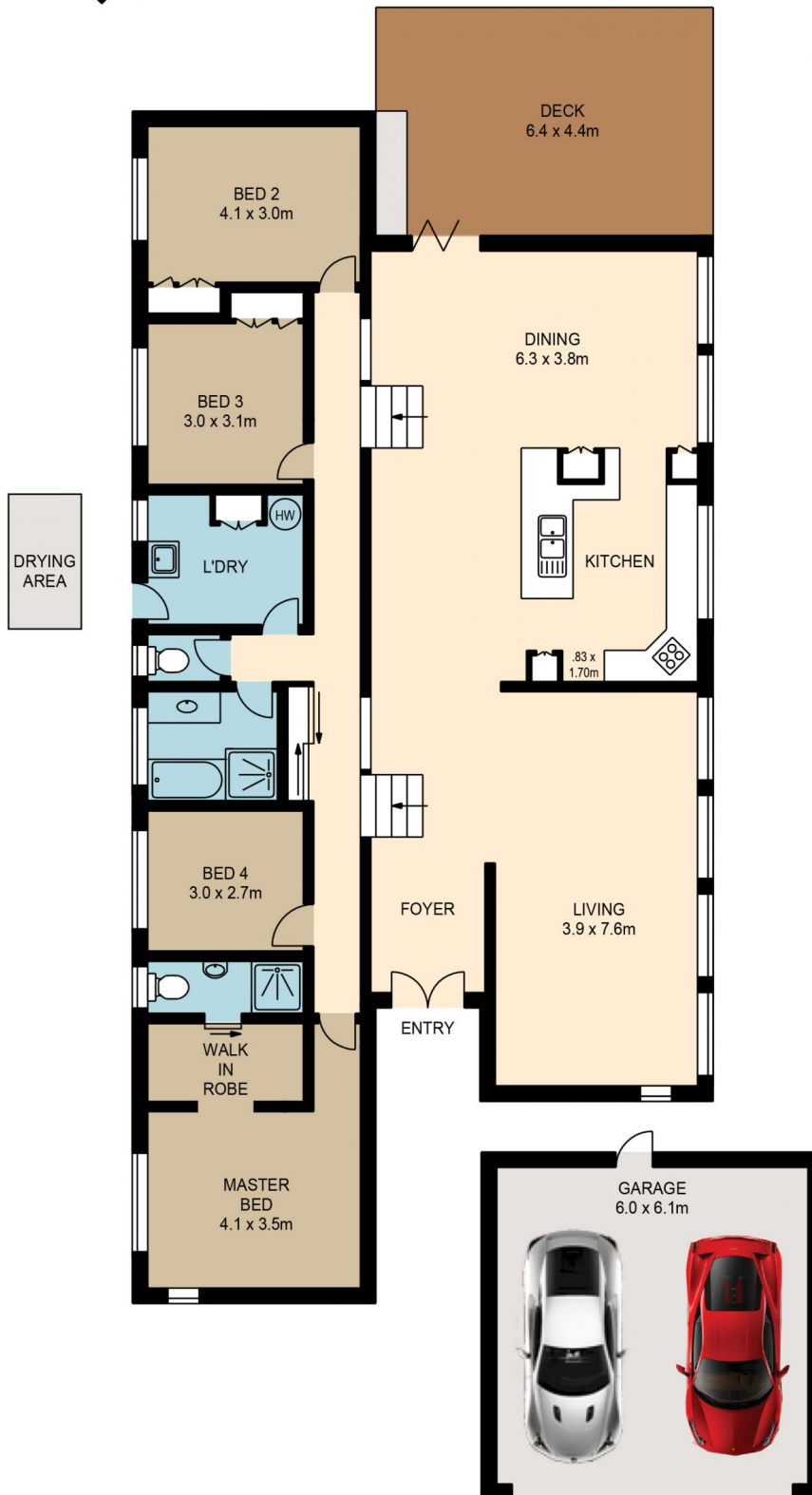
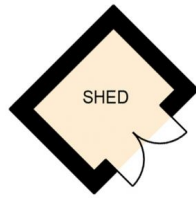
Featuring imposing 4 meter cathedral ceilings to the living rooms, polished honey coloured Cyprus pine flooring throughout, Air Conditioning throughout, glorious light filled rooms with ample windows, separate living and practical open plan kitchen and dining which opens on to a covered back deck.

The modern kitchen offers a dishwasher, European appliance and gas cooking, a wine storage, duel basin sink and copious amounts of storage space. The dining side of the kitchen offers glass door cabinetry for display the Sunday's best crockery or your most prized liquor collection.

Building Size : 261 sqm
Land Size : 684 sqm
View : <https://www.brisbaneboutique.com/lease/qld/inner-south/balmoral/residential/house/6262765>



Pelham Marsh
3169 0230



PLANS SHOWN ONLY INDICATIVE OF LAYOUT. DIMENSIONS ARE APPROXIMATE.

All information contained herein is gathered from sources we believe to be reliable. However we cannot guarantee its accuracy and interested persons should rely on their own enquiries.

internal	external
230sqm	31sqm



4 FISHERMANS BEND

Created by RealScope®
www.realscope.com.au