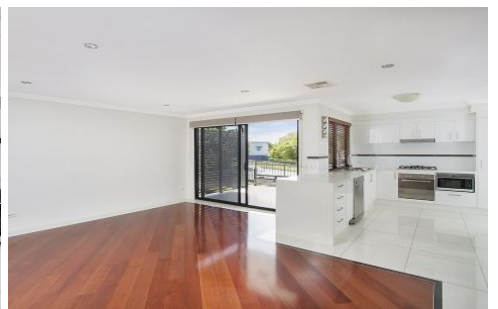


# Brisbane Boutique Property



**3/575 Vulture Street East East Brisbane QLD**

**3**  **2**  **2** 

**UNDER APPLICATION - OPEN HOME CANCELLED -**  
This near new contemporary townhouse is the ultimate in inner city living. Central location, offering a cosmopolitan lifestyle just 3 km from the city. Entertain guests on the large outdoor tiled deck, or head out to nearby cafes', restaurants, bars, pubs and boutiques including the popular Woolloongabba antiques precinct. Walk to games at the GABBA and go for morning runs along Norman Creek. "Churchie" is also within walking distance.

Easy access to the CLEM7 north and Pacific Motorway south is ideal for weekends away on the Sunshine or Gold Coasts. Ideal for an executive couple with fast city buses on nearby Stanley Street, Coorparoo train station less than one km away, and Mowbray Park ferry terminal less than two km away.

**Building Size** : 160 sqm  
**View** : <https://www.brisbaneboutique.com/lease/qld/inner-south/east-brisbane/residential/townhouse/6262763>



**Pelham Marsh**  
**3169 0230**