

Brisbane Boutique Property



58 Martha Street Camp Hill QLD

3  1  1 

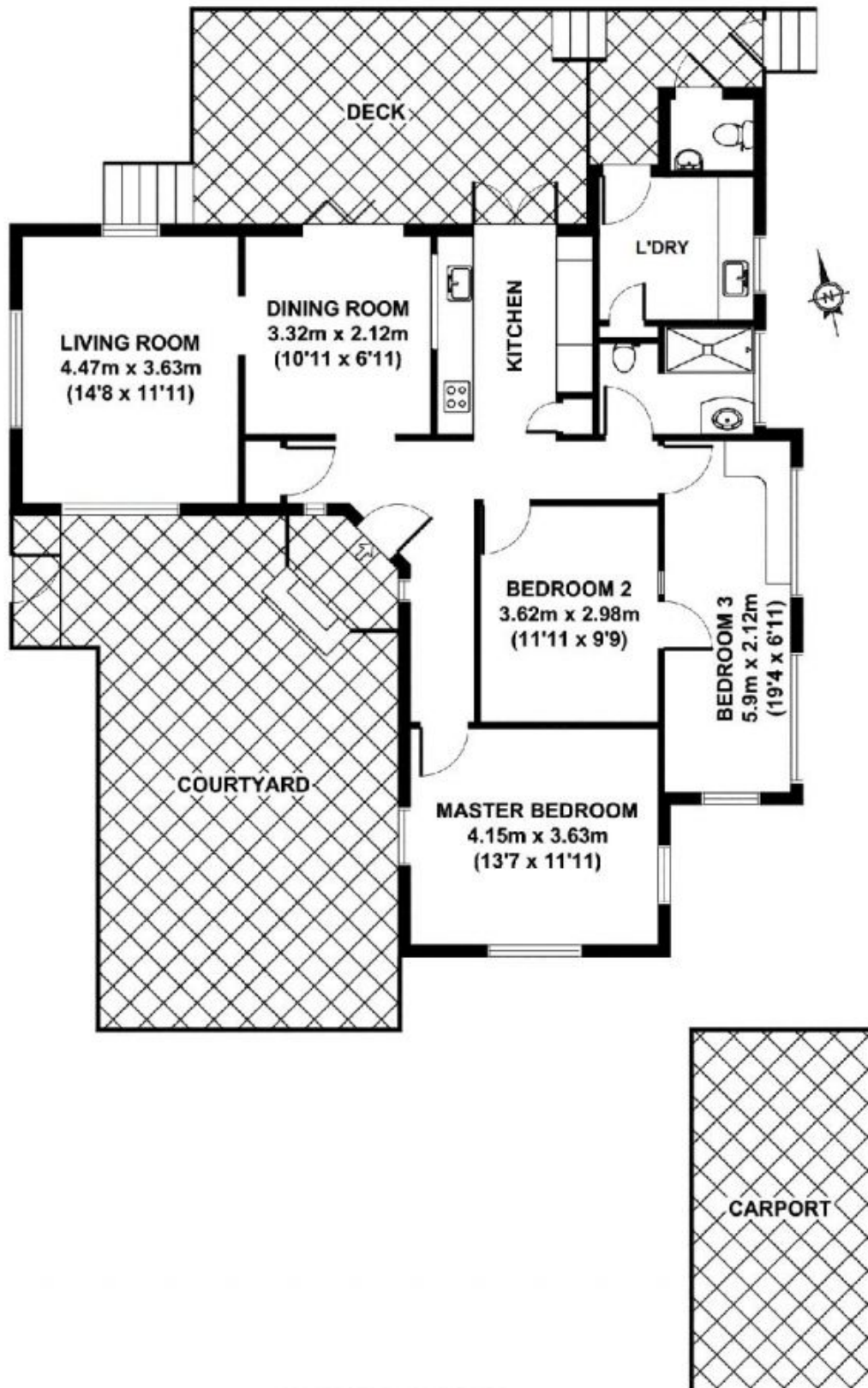
UNDER APPLICATION This cute character 1930's cavity brick home offers a smooth meld of old and new. A beautifully presented home offers high end fixtures and fittings which include in the kitchen an integrated fridge and induction cook top, granite benches and loads of cupboard space. the polished hardwood floors epitomize the bygone era this home was built in and with a beautiful home like this you will love living here.

The home proudly offers 3 bedrooms with the master being air conditioned, 2 with robes, and the 3rd with a built in desk (See the floor-plan), a separate air conditioned Lounge and a dining room that opens through stained timber concertina doors to a massive back deck with its own toilet for those nights you entertain your family and friends. The designer kitchen will see you the envy of all your friends and will more than suffice for the dinner

Building Size : 194 sqm
Land Size : 400 sqm
View : <https://www.brisbaneboutique.com/lease/qld/southside/camp-hill/residential/house/6262762>



Pelham Marsh
3169 0230



58 MARTHA STREET

APPROX. GROSS INTERNAL FLOOR AREA 102 SQ M / 1098 SQ FT
APPROX. FLOOR AREA INCLUDING EXTERNAL AREAS 194 SQ M / 2088 SQ FT

Whilst every attempt has been made to ensure the accuracy of the floorplan contained here, measurements of doors, windows and rooms are approximate and no responsibility is taken for any error omission or mis-statement. These plans are for representation purposes only and should be used as such by any prospective purchaser. The services, systems and appliances listed in this specification have not been tested and no guarantee as to their operating ability or their efficiency can be given

Created by REALSCOPE ©
www.realscope.com.au