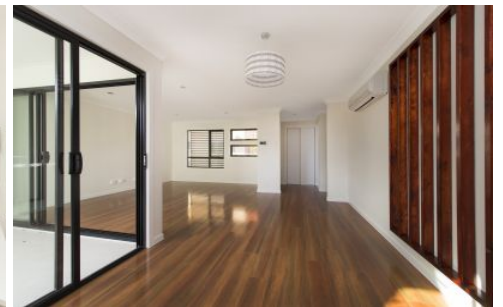


# Brisbane Boutique Property



**3/9 Haig Street Coorparoo QLD**

**3  2  2 **

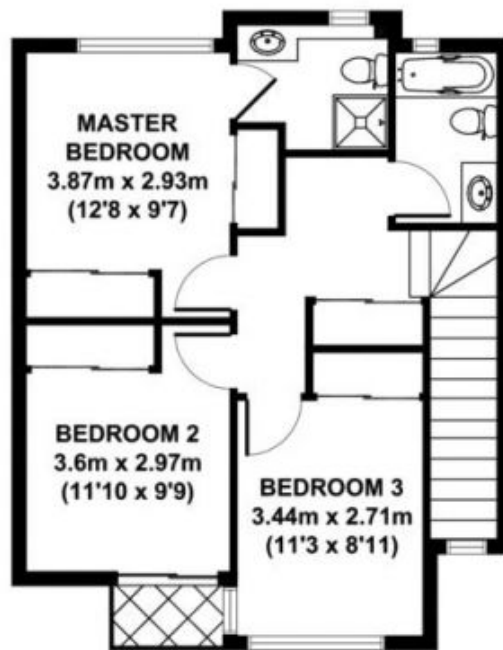
UNDER APPLICATION - Living in a beautiful spacious home with contemporary design really does something for the soul. You will wake up fresh every morning knowing your new low maintenance home is the epitome of a luxurious lifestyle.

Situated just a 3 minute walk to Coorparoo Central and the now open Dendy 10 cinema complex at Coorparoo SQ with a multitude of restaurants and Bars, and Aldi's newest store. You will enjoy the convenience of inner city living, a major public transport hub with both train and bus within walking distance, and a myriad of specialty shops, cafes, and medical facilities. All just 5k's from the Brisbane CBD. Bedazzled by the uninterrupted views of the fireworks and the twinkle of the city lights from the 3rd level. This is one of the most well laid, practical, luxurious, spacious town homes we have had the pleasure of managing.

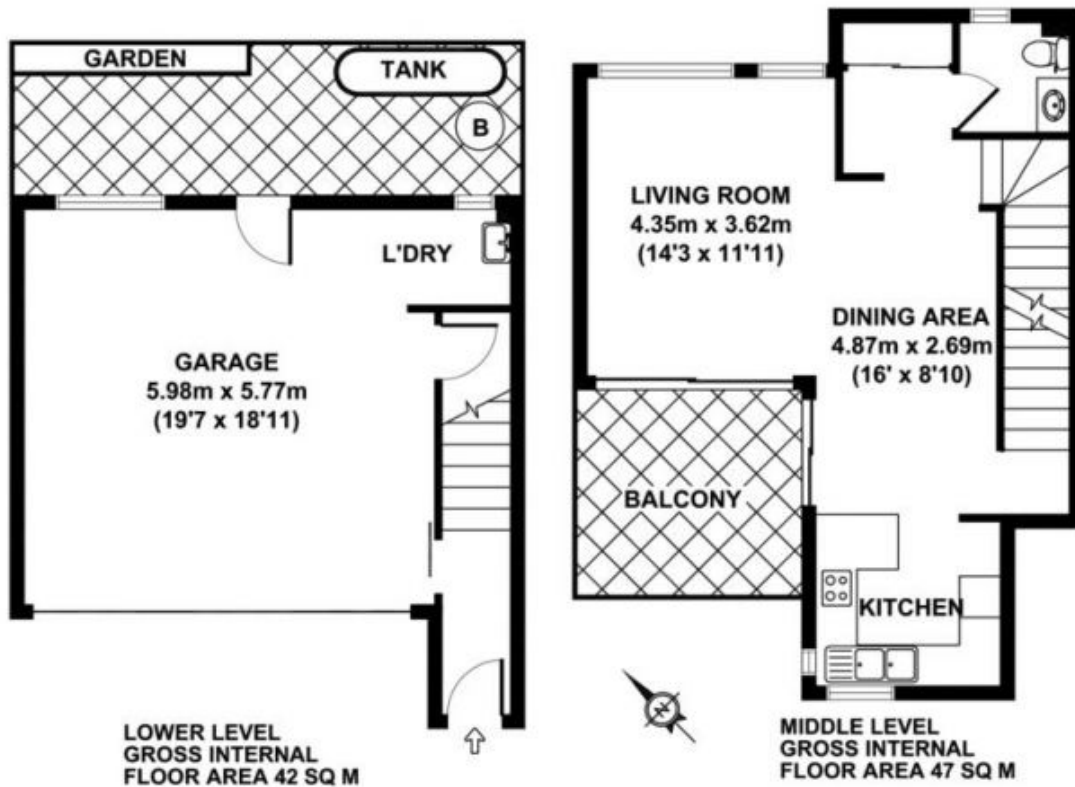
**Building Size** : 144 sqm  
**View** : <https://www.brisbaneboutique.com/lease/qld/southside/coorparoo/residential/townhouse/6262738>



**Pelham Marsh**  
**3169 0230**



UPPER LEVEL  
GROSS INTERNAL  
FLOOR AREA 55 SQ M



LOWER LEVEL  
GROSS INTERNAL  
FLOOR AREA 42 SQ M

MIDDLE LEVEL  
GROSS INTERNAL  
FLOOR AREA 47 SQ M

3/9 HAIG STREET

APPROX. GROSS INTERNAL FLOOR AREA 144 SQ M / 1550 SQ FT  
APPROX. FLOOR AREA INCLUDING EXTERNAL AREAS 172 SQ M / 1851 SQ FT

Whilst every attempt has been made to ensure the accuracy of the floorplan contained here, measurements of doors, windows and rooms are approximate and no responsibility is taken for any error omission or mis-statement. These plans are for representation purposes only and should be used as such by any prospective purchaser. The services, systems and appliances listed in this specification have not been tested and no guarantee as to their operating ability or their efficiency can be given