



3/63 Stephens Street Morningside QLD

3  2  2 

UNDER APPLICATION - Sipping champagne on your deck and soaking up the brilliant city views whilst entertaining friends is just one of the advantages you will find with this home. Offering a luxurious fit out this home will surprise all who visit.

**View** : <https://www.brisbaneboutique.com/lease/qld/inner-south/morningside/residential/townhouse/6262730>

An executive terrace house in the Hawthorne/Balmoral catchment area offering a well-designed layout that is spacious, secure and private. This over sized 3 bedroom, 2 bathroom, 2 level town home displaying exclusive fittings and fixtures, large rooms and soaring ceilings will be a brilliant place to call home. Situated in an exclusive, elevated enclave of high end homes bordering Hawthorne and Balmoral, offering a luxurious fit out, and boasting city views. The upper level features an expansive living space with extra high ceilings and two verandas with sweeping views, allowing flowing breezes and giving a feeling of



**Pelham Marsh**  
3169 0230



**LOWER LEVEL**



**UPPER LEVEL**



PLANS SHOWN ONLY INDICATIVE OF LAYOUT. DIMENSIONS ARE APPROXIMATE.

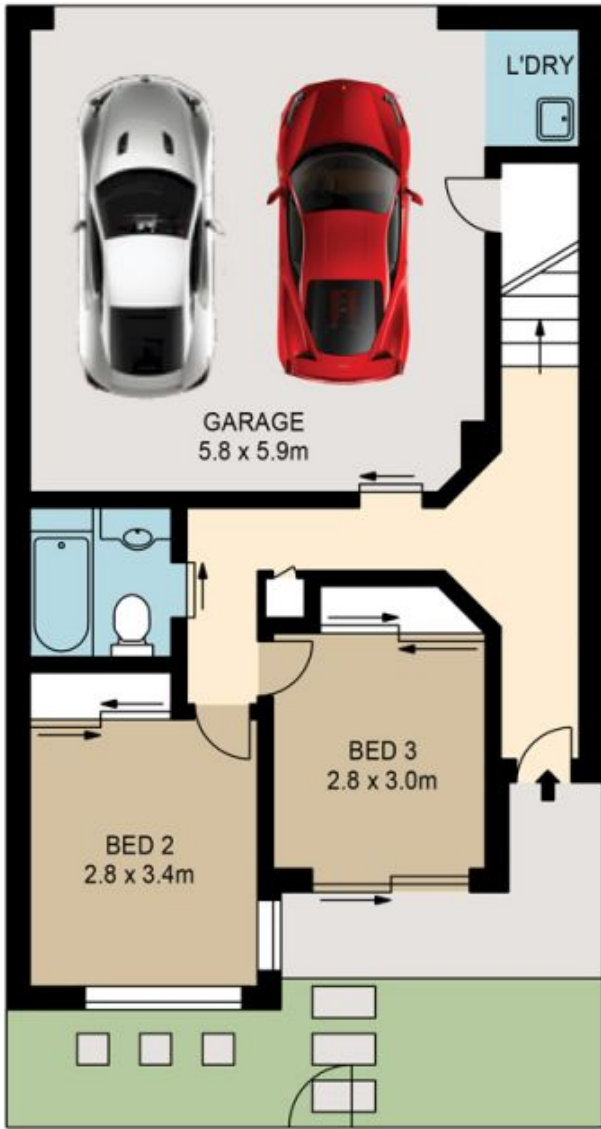
All information contained herein is gathered from sources we believe to be reliable. However we cannot guarantee its accuracy and interested persons should rely on their own enquiries.

	internal	external
lower	78sqm	6sqm
upper	76sqm	20sqm
<b>total</b>	<b>154sqm</b>	<b>26sqm</b>

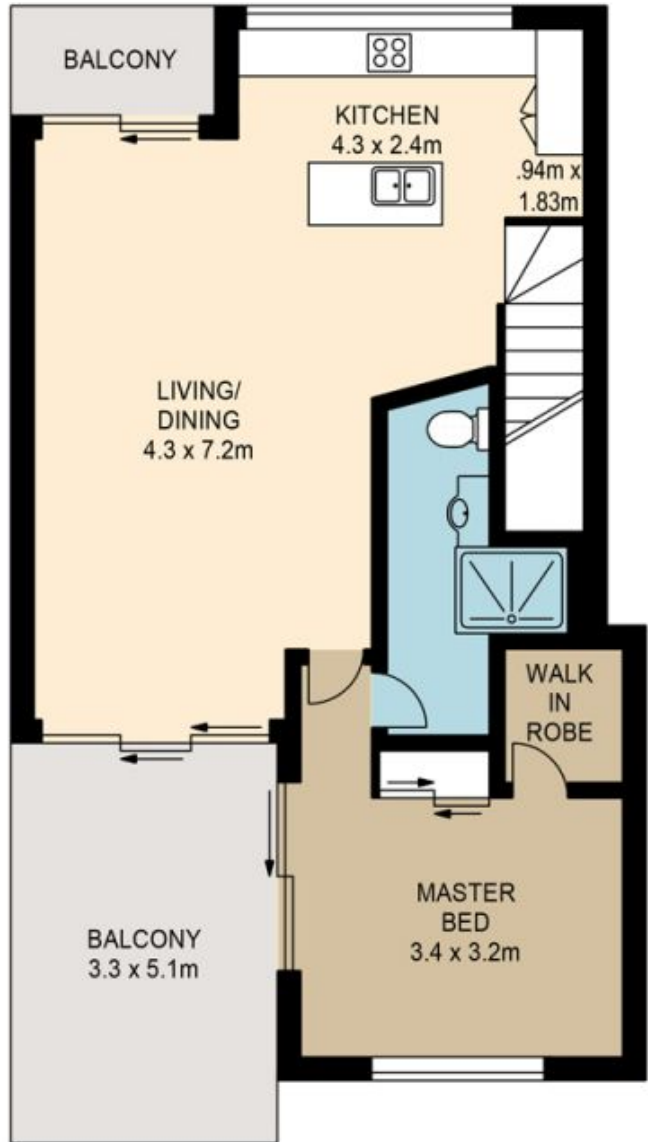


**3-63 STEPHENS STREET**

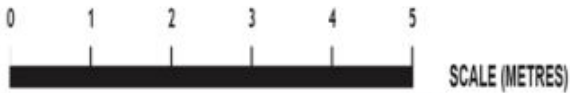
Created by RealScope©  
www.realscope.com.au



**LOWER LEVEL**



**UPPER LEVEL**



PLANS SHOWN ONLY INDICATIVE OF LAYOUT. DIMENSIONS ARE APPROXIMATE.

All information contained herein is gathered from sources we believe to be reliable. However we cannot guarantee its accuracy and interested persons should rely on their own enquiries.

	internal	external
lower	78sqm	6sqm
upper	76sqm	20sqm
total	154sqm	26sqm



**3-63 STEPHENS STREET**

Created by RealScope®  
www.realscope.com.au