



1/43 Robinson Street Coorparoo QLD

2  1  1 

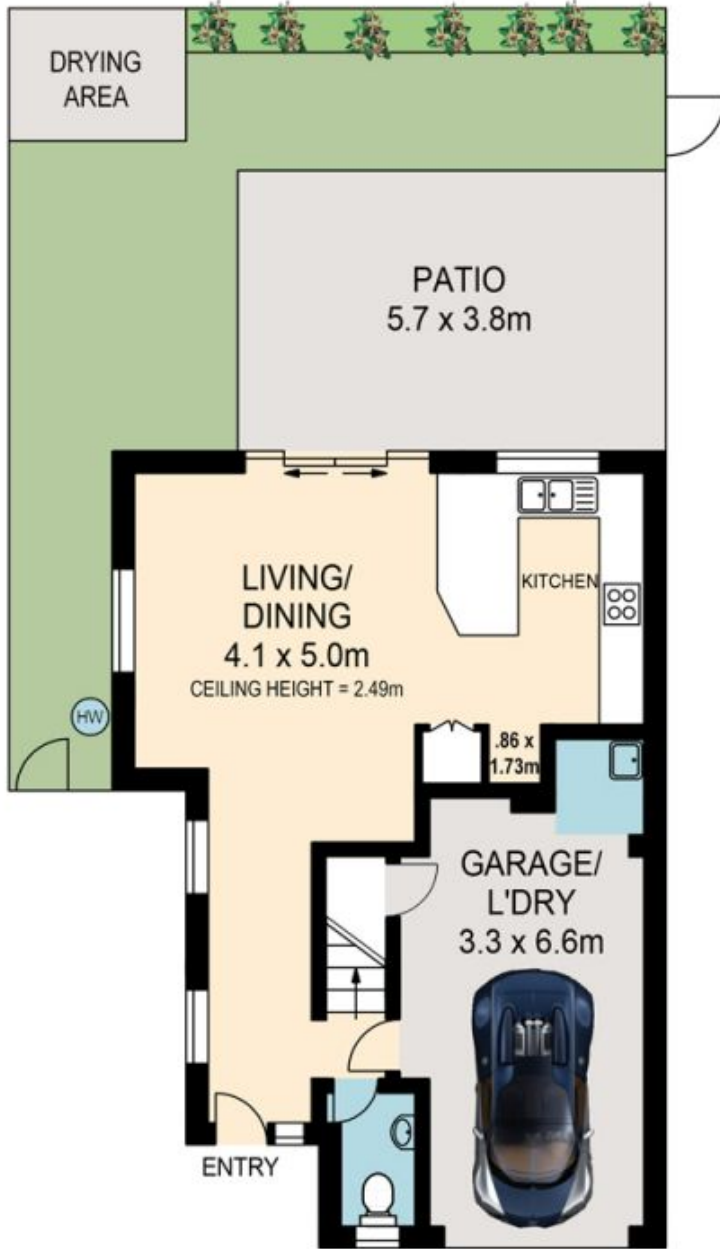
LEASED - This townhome is beautifully laid out, with 2 bedrooms + a big mezzanine study and is situated just a hop, skip and a jump from the new Coorparoo Sq in Coorparoo central, with new cinemas, cafes and bars, shops, transport and a myriad of amenities. Put your feet up and relax in this low maintenance property that will be pleasant to enter every time you come home.

Offering a tiled big open plan living and dining area, a modern large kitchen with plenty of storage, a large brilliant covered outdoor entertaining area and a spacious courtyard, and in the north east corner of the complex. 2 big bedrooms both with walk-in robes, a 2 way bathroom and both are air-conditioned. There is also a loft style study which is a brilliant use of space and eclectic design, large enough to use as a second living space or a not so private spare bedroom. Overall from the moment you enter you

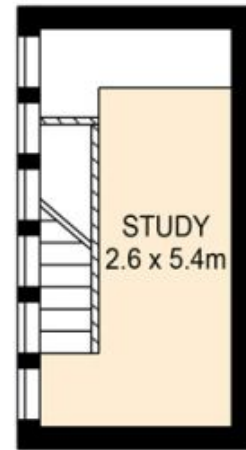
Building Size : 122 sqm
View : <https://www.brisbaneboutique.com/lease/qld/southside/coorparoo/residential/townhouse/6262720>



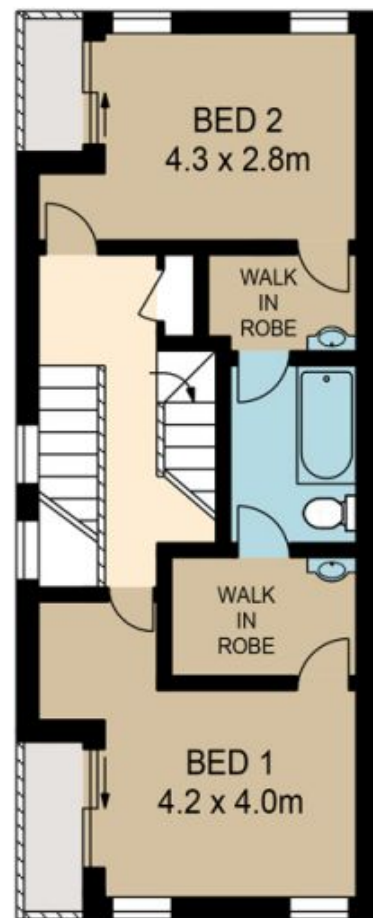
Pelham Marsh
3169 0230



LOWER LEVEL



UPPER LEVEL



MIDDLE LEVEL



PLANS SHOWN ONLY INDICATIVE OF LAYOUT. DIMENSIONS ARE APPROXIMATE.

All information contained herein is gathered from sources we believe to be reliable. However we cannot guarantee its accuracy and interested persons should rely on their own enquiries.

	internal	external
lower	61sqm	22sqm
middle	46sqm	4sqm
upper	15sqm	
total	122sqm	26sqm



1-43 ROBINSON STREET

Created by RealScope®
www.realscope.com.au