

Brisbane Boutique Property



42 Newman Avenue Camp Hill QLD

5 🚗 3 🚗 4 🚗

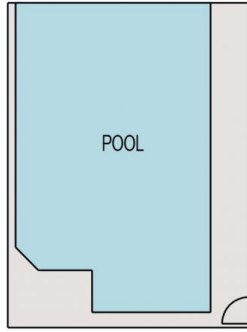
UNDER CONTRACT - If you are looking for a near new ultra-modern home on a large parcel of exclusive land then this executive residence is something to be seen. This stunning home not only offers city views from the upstairs living rooms and rear entertaining deck, it is also offering 5 great size bedrooms, a study, a high end high luxury kitchen, 3 living rooms, and 3 bathrooms, these are just a few of the many features this home has to offer. The 5th Bedroom is so big in fact it has been utilised as a Pilates Studio, Games Room or home office, as it has separate access to the front of the home.

Opposite to the current trend of building large homes on small land lots, this huge residence proudly occupies 607m² of beautiful near flat land on the exclusive Newman Ave, offering an amazing amount of space, privacy, practicality and comfort, all coupled with opulence and

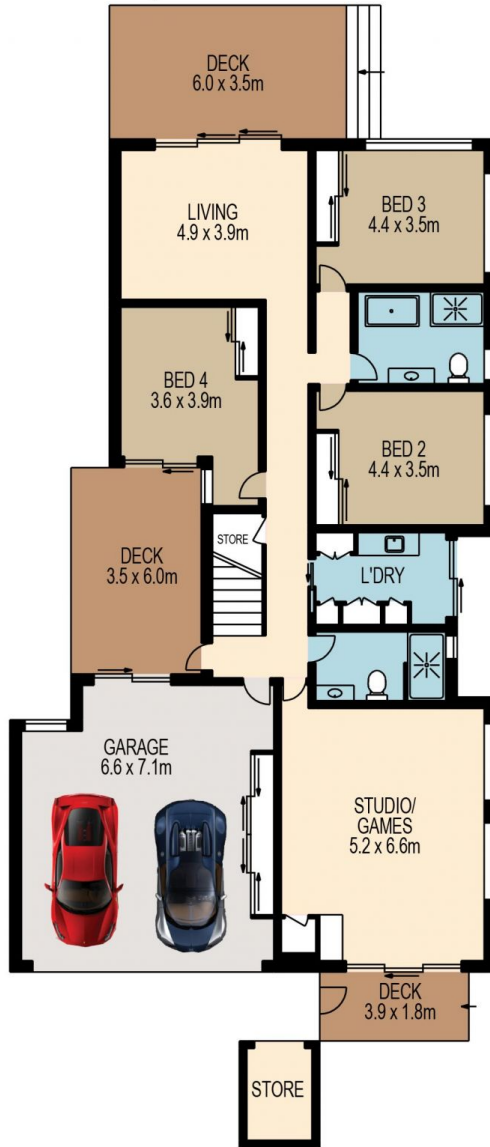
Price : \$ 1,690,000
Building Size : 473 sqm
Land Size : 607 sqm
View : <https://www.brisbaneboutique.com/sale/qld/southside/camp-hill/residential/house/6262711>



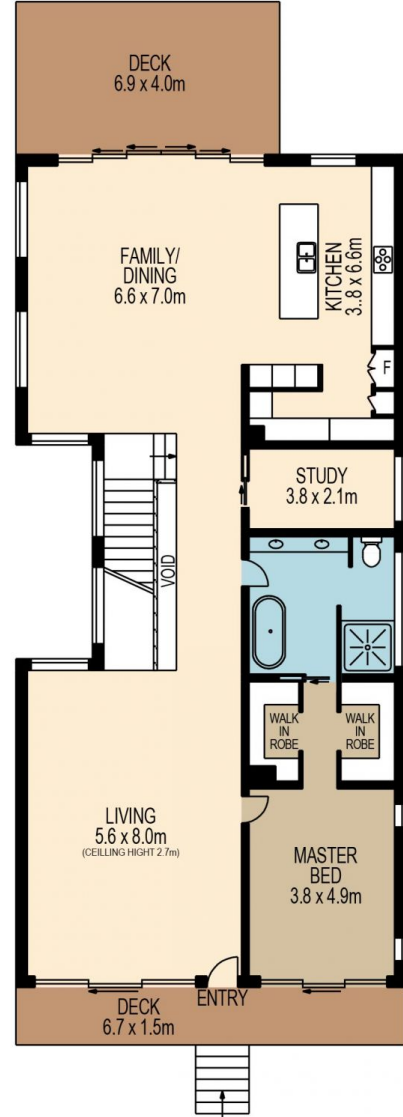
Pelham Marsh
3169 0230



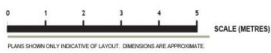
DISTANCE NOT TO SCALE



LOWER LEVEL



UPPER LEVEL



All information contained herein is gathered from sources we believe to be reliable. However we cannot guarantee its accuracy and interested persons should rely on their own enquiries.

	internal	external
lower	203sqm	49sqm
upper	179sqm	42sqm
total	382sqm	91sqm



42 NEWMAN AVENUE

Created by RealScope®
www.realscope.com.au