



1/43 Robinson Street Coorparoo QLD

2 **1** **1**

This beautifully laid out 2 bedroom + a big study townhouse is situated just a hop, skip and a jump from the new Coorparoo Sq, with its new cinemas, cafes and bars, shops, transport and a myriad of amenities. Put your feet up and relax in this low maintenance property that will be pleasant to enter every time you come home.

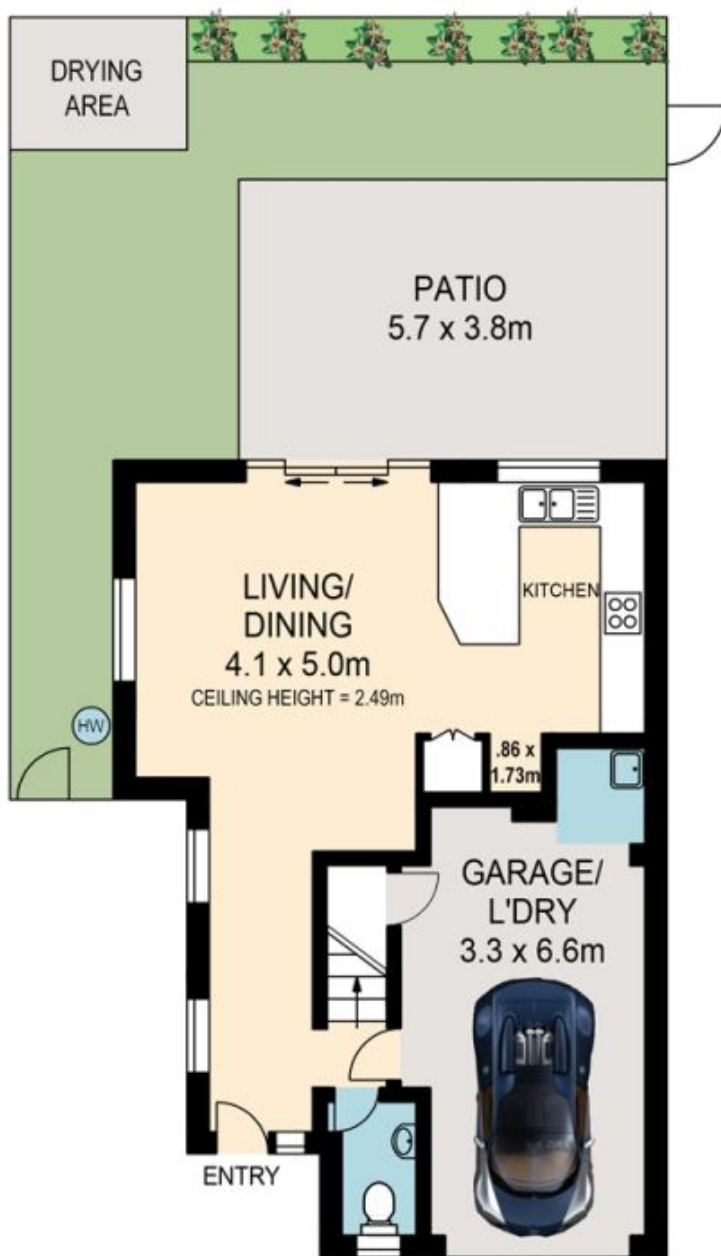
Offering a tiled big open plan living and dining area, a modern large kitchen with plenty of storage, a brilliant covered outdoor entertaining area and a spacious courtyard, In the north east corner of the complex. 2 big bedrooms both with walk-in robes, a 2 way bathroom and are air-conditioned. There is also a loft style study which is a brilliant use of space and eclectic design, large enough to use as a second living space or a not so private spare bedroom. Overall from the moment you enter you will feel at ease in your new home.

Building Size : 122 sqm

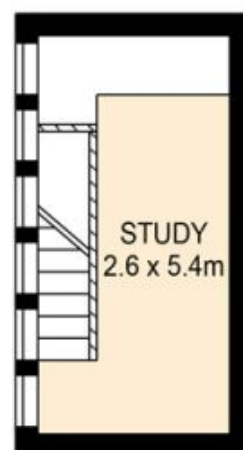
View : <https://www.brisbaneboutique.com/lease/qld/southside/coorparoo/residential/townhouse/6262701>



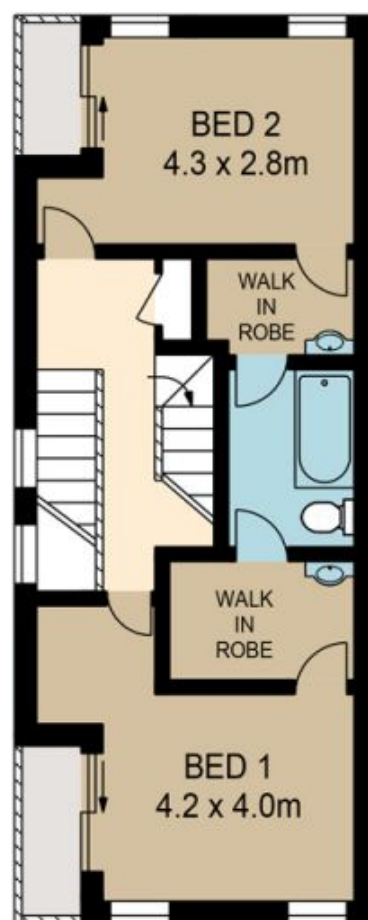
Pelham Marsh
3169 0230



LOWER LEVEL



UPPER LEVEL



MIDDLE LEVEL



PLANS SHOWN ONLY INDICATIVE OF LAYOUT. DIMENSIONS ARE APPROXIMATE.

All information contained herein is gathered from sources we believe to be reliable. However we cannot guarantee its accuracy and interested persons should rely on their own enquiries.

	internal	external
lower	61sqm	22sqm
middle	46sqm	4sqm
upper	15sqm	
total	122sqm	26sqm



1-43 ROBINSON STREET

Created by RealScope®
www.realscope.com.au