

# Brisbane Boutique Property



4/19 King Street Annerley QLD

2  1  1 

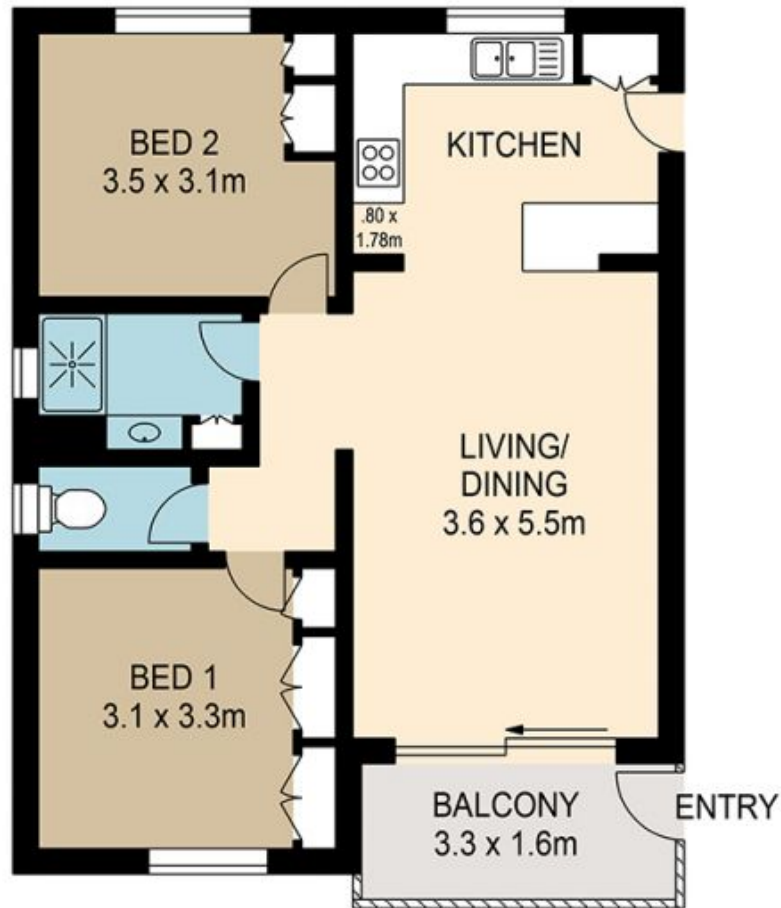
This Cute fully renovated top floor 2 bedroom unit offers a beautiful Kitchen and a beautiful bathroom, gorgeous honey coloured hardwood timber, good views over the suburbs, a huge lock up garage with the laundry. A very private unit, being an end unit there are no common walls. A picture says a thousand words. Live comfortably, and live luxuriously all just a few minutes walk to major shopping, the PA Hospital, our major Brisbane bus network and a myriad of cafes, fast food outlets, parks, the Brisbane bikeway and loads of boutique shops.

Please no pets. Email for a suitable inspection time.  
AVAILABLE from the 9th of December.

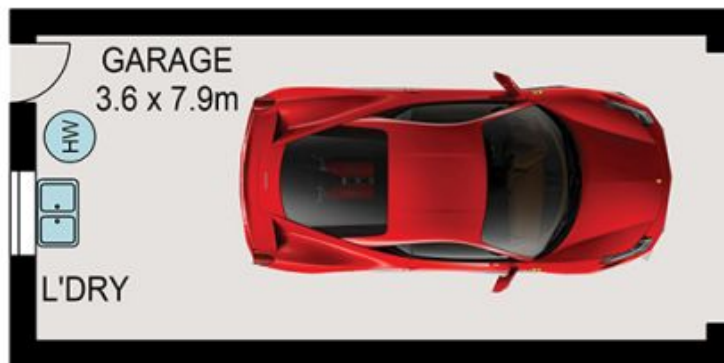
**Building Size** : 93 sqm  
**View** : <https://www.brisbaneboutique.com/lease/qld/inner-south/annerley/residential/unit/6262700>



**Pelham Marsh**  
3169 0230



**UPPER LEVEL**



**LOWER LEVEL**



PLANS SHOWN ONLY INDICATIVE OF LAYOUT. DIMENSIONS ARE APPROXIMATE.

All information contained herein is gathered from sources we believe to be reliable. However we cannot guarantee its accuracy and interested persons should rely on their own enquiries.

	internal	external
lower	28sqm	
upper	65sqm	5sqm
<b>total</b>	<b>93sqm</b>	<b>5sqm</b>



**4-19 KING STREET**

Created by RealScope®  
www.realscope.com.au