

Brisbane Boutique Property



4/61 Shire Street Coorparoo QLD

2  **1**  **2** 

UNDER APPLICATION - Brilliant fully renovated top floor 2 bedroom unit with an eclectic industrial finish. With a spacious living and dining room, and a new beautiful Caesar stone kitchen with stainless appliances, a massive bathroom, a separate toilet, and two good size bedrooms, the master has built in robes.

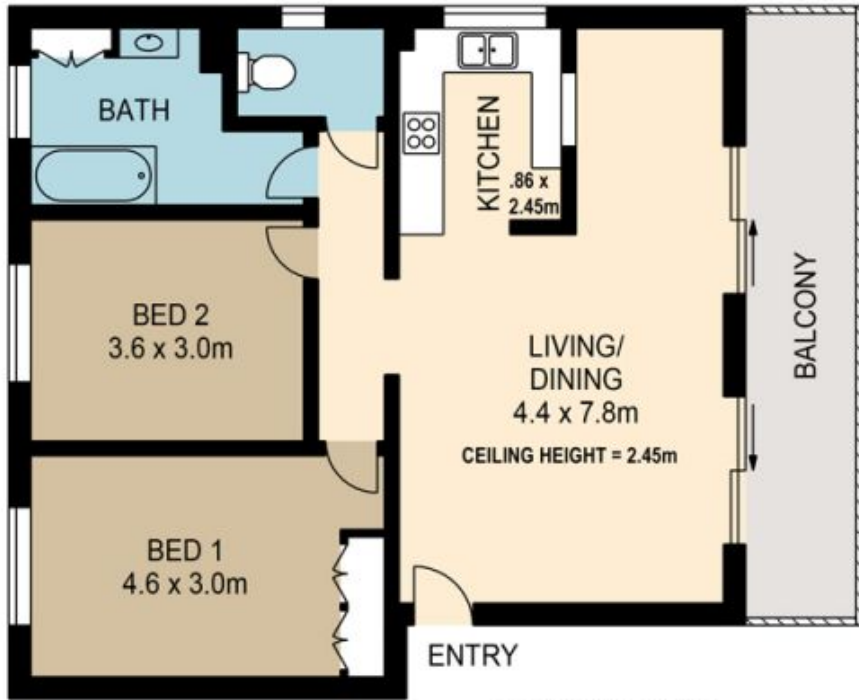
Sitting on the top floor this North East corner unit captures loads of plethora of natural light and the unit offers fantastic local views to the east over Camp Hill, and North to City glimpses from the balcony and the kitchen window. This is a safe a secure unit with security intercom access to the front door and a huge garage that will house two small cars or one car and some toys.

Ideally suited to a couple looking for a good unit walking distance to Coorparoo central and the soon to be opened

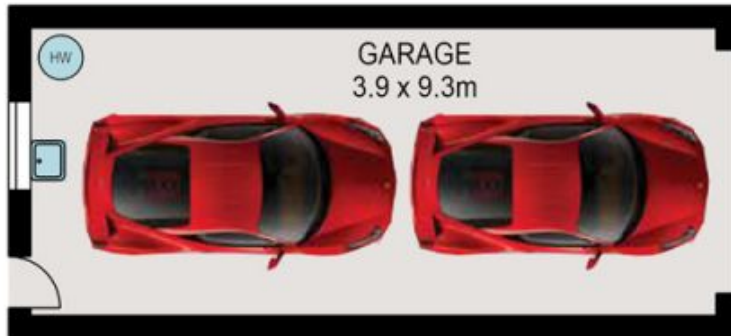
Building Size : 126 sqm
View : <https://www.brisbaneboutique.com/lease/qld/southside/coorparoo/residential/unit/6262692>



Pelham Marsh
3169 0230



UPPER LEVEL



LOWER LEVEL



PLANS SHOWN ONLY INDICATIVE OF LAYOUT. DIMENSIONS ARE APPROXIMATE.

All information contained herein is gathered from sources we believe to be reliable. However we cannot guarantee its accuracy and interested persons should rely on their own enquiries.

	internal	external
lower	36sqm	
upper	78sqm	12sqm
total	114sqm	12sqm



4-61 SHIRE STREET

Created by RealScope®
www.realscope.com.au