



1/22 Renton Street Camp Hill QLD

3 2 2

UNDER APPLICATION - OPEN HOME CANCELLED -
Sitting in a small complex of only 3 - UNIT 1 is available on the 7th of October. Beautifully appointed and featuring 3 generous bedrooms all with built in robes with the master bedroom and living rooms being air-conditioned, Spacious open plan living room and a second living room open the top floor, Caesar stone top kitchen with European "Ariston" appliances, 2 bathrooms including Ensuite, 3 toilets, and full crimsafe screens to all windows and sliding doors.

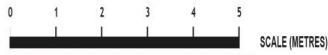
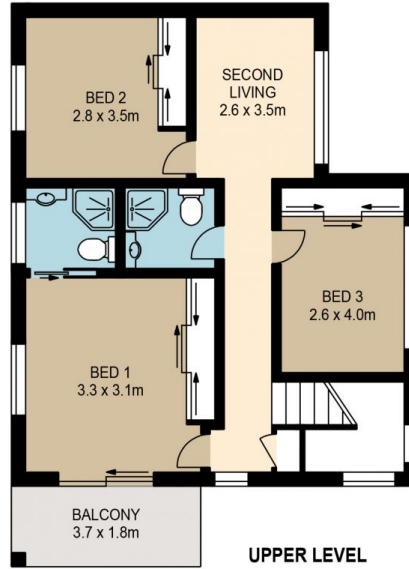
View : <https://www.brisbaneboutique.com/lease/qld/southside/camp-hill/residential/townhouse/6262683>

Quite unique in design, A good size courtyard that is designed to be easy to maintain. Very convenient position.



Pelham Marsh
3169 0230

Situated just 3 minutes' walk from the major transport corridor "Southeast Busway", 6 minutes to Westfield's Carindale Shopping Village, and 2 minutes to Carina Central. Be the first to inspect these one year old



LOWER LEVEL

UPPER LEVEL

PLANS SHOWN ONLY INDICATIVE OF LAYOUT. DIMENSIONS ARE APPROXIMATE

All information contained herein is gathered from sources we believe to be reliable. However we cannot guarantee its accuracy and interested persons should rely on their own enquiries.

	internal	external
lower	70sqm	6sqm
upper	66sqm	7sqm
total	136sqm	13sqm



UNIT 1/22 RENTON STREET

Created by RealScope®
www.realscope.com.au