



12/10 Carlow Street West End QLD

2 1 1

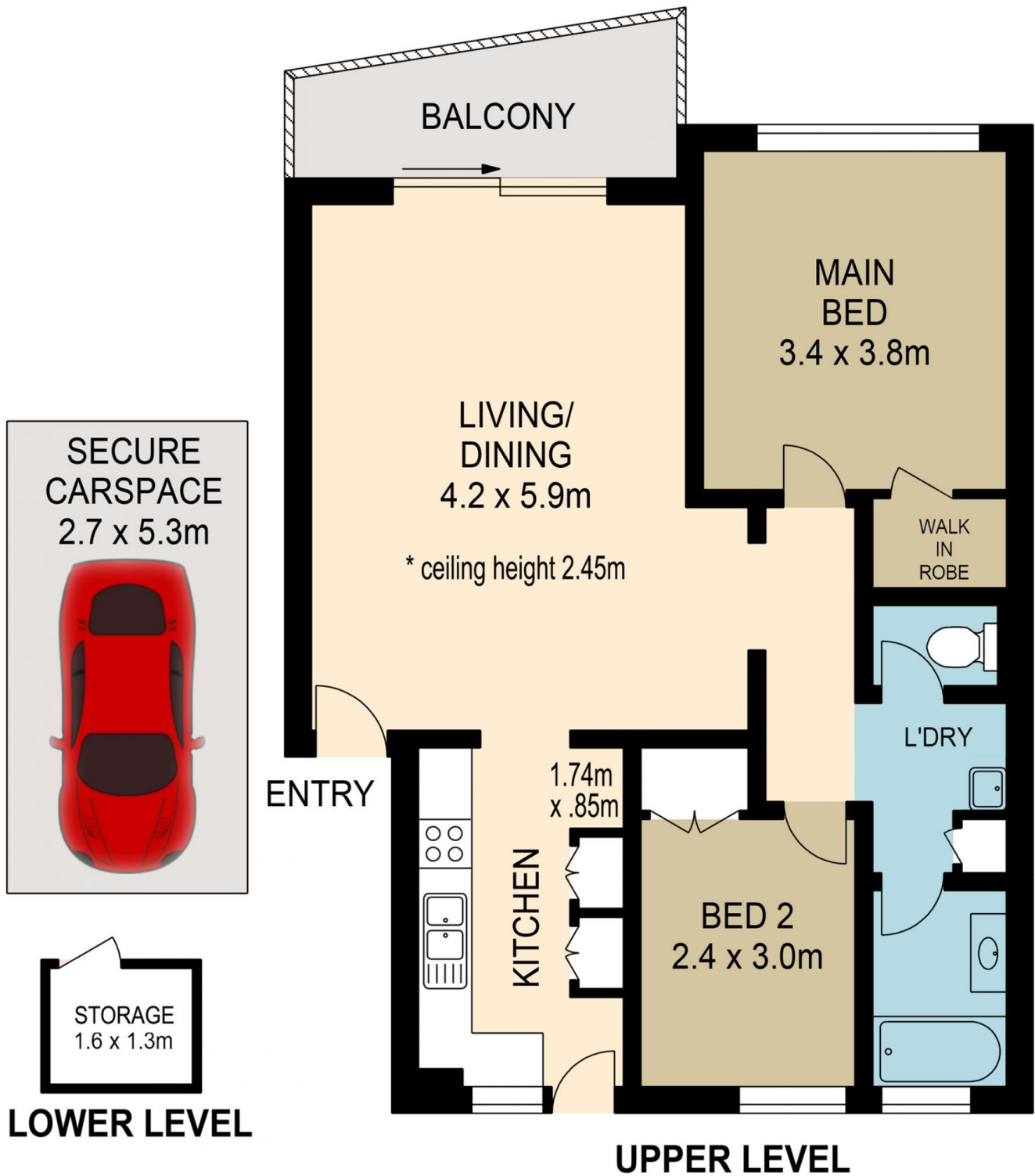
This third level riverfront unit has just had a beautiful makeover by the family that have been the owners since the early 80's. West End has it all, from entertainment to the alternative, within close proximity to the city, two universities, a multitude employment and diversity to suit. the outlook beside the river is shaded and calm and nearby Orleigh Park provides a great opportunity to enjoy quiet walks along the Brisbane River, and just a short walk to the citycat and numerous bus services, restaurants, cafes and shops.

This two bedroom unit offers built-in robes, a combined lounge and dining area opening to a beautiful view right above the river. A modern kitchen with gas cooking, a freshly renovated bathroom and a separate toilet, internal laundry and the unit has a storage locker in the garage area which also provides car accommodation for 1. A

Price : \$ 464,250
Building Size : 90 sqm
View : <https://www.brisbaneboutique.com/sale/qld/inner-south/west-end/residential/unit/6262663>



Pelham Marsh
3169 0230



SCALE (METRES)

PLANS SHOWN ONLY INDICATIVE OF LAYOUT. DIMENSIONS ARE APPROXIMATE.

All information contained herein is gathered from sources we believe to be reliable. However we cannot guarantee its accuracy and interested persons should rely on their own enquiries.

	internal	external
lower	16sqm	
upper	74sqm	6sqm
total	90sqm	6sqm



12-10 CARLOW STREET

Created by RealScope®
www.realscope.com.au