



1/37 Derby Street Coorparoo QLD

2 1 2

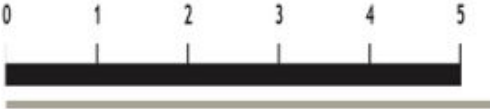
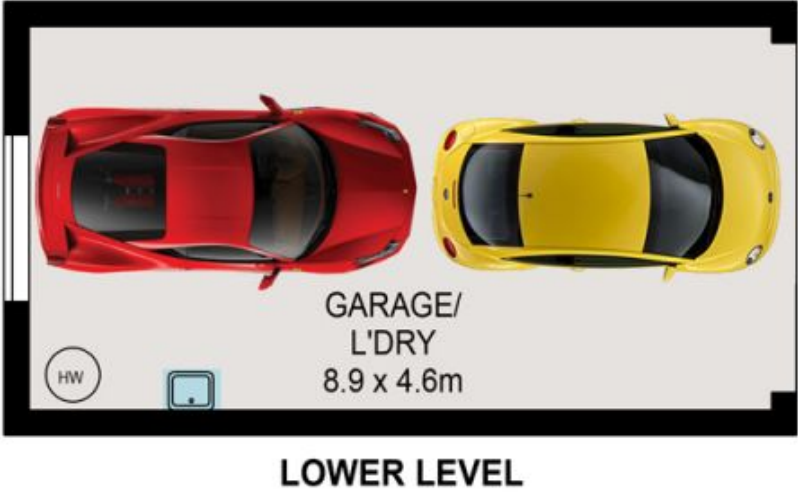
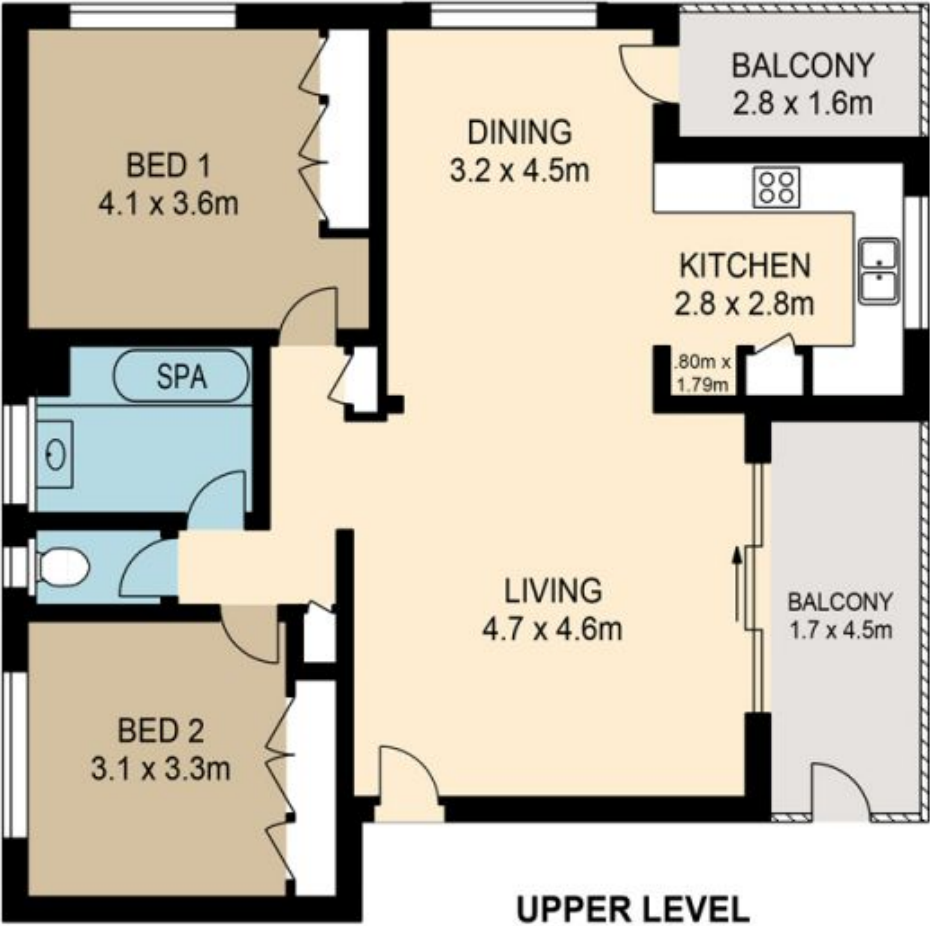
Upon entering this unsuspecting unit you are greeted with a beautiful unit that is not only huge but has been renovated to the highest of standards comparable to if not better than any of the new units available in our market and definitely bigger in every way. Situated just a short stroll from Coorparoo central and the soon to be completed Coorparoo SQ development which offers 10 cinemas, and a myriad of cafes, restaurants, a new Aldi and the South East Bus way and also just short stroll to the infamous beautiful Martha St Cafe Precinct.

Thoughtfully laid out this unit offers two big bedrooms both with built-in's, a 5 star finished bathroom with spa, and a separate toilet, a massive living room, a massive dining room, and a high end kitchen with on trend fixtures and fittings. The unit also has a huge garage that fits 2 small cars and the laundry, and off the living room and off the

**Price** : \$ 430,000  
**Building Size** : 140 sqm  
**View** : <https://www.brisbaneboutique.com/sale/qld/southside/coorparoo/residential/unit/6262661>



**Pelham Marsh**  
3169 0230



PLANS SHOW ONLY INDICATIVE OF LAYOUT. DIMENSIONS ARE APPROXIMATE.  
All information contained herein is gathered from sources we believe to be reliable.  
However we cannot guarantee its accuracy and interested persons should rely on their own enquiries.

	internal	external
lower	40sqm	
upper	87sqm	13sqm
total	127sqm	13sqm



1-37 DERBY STREET

Created by RealScope®  
www.realscope.com.au