

Brisbane Boutique Property



47 Leon Capra Drive Augustine Heights QLD

3 2 2

You will love coming home to this quite low-set residence, offering peace, privacy and very low maintenance living.

Positioned in an ideal location just opposite the popular Saint Mary Makillop Park, within walking distance to the new IGA shopping complex, schools and bus stop and just minutes to Springfield Lakes train station.

Built only five years ago, be sure to capitalise on the growth of the area in the coming years as Augustine Heights continues to grow with new shopping centres, water park and golf links soon to be available.

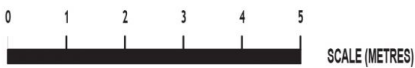
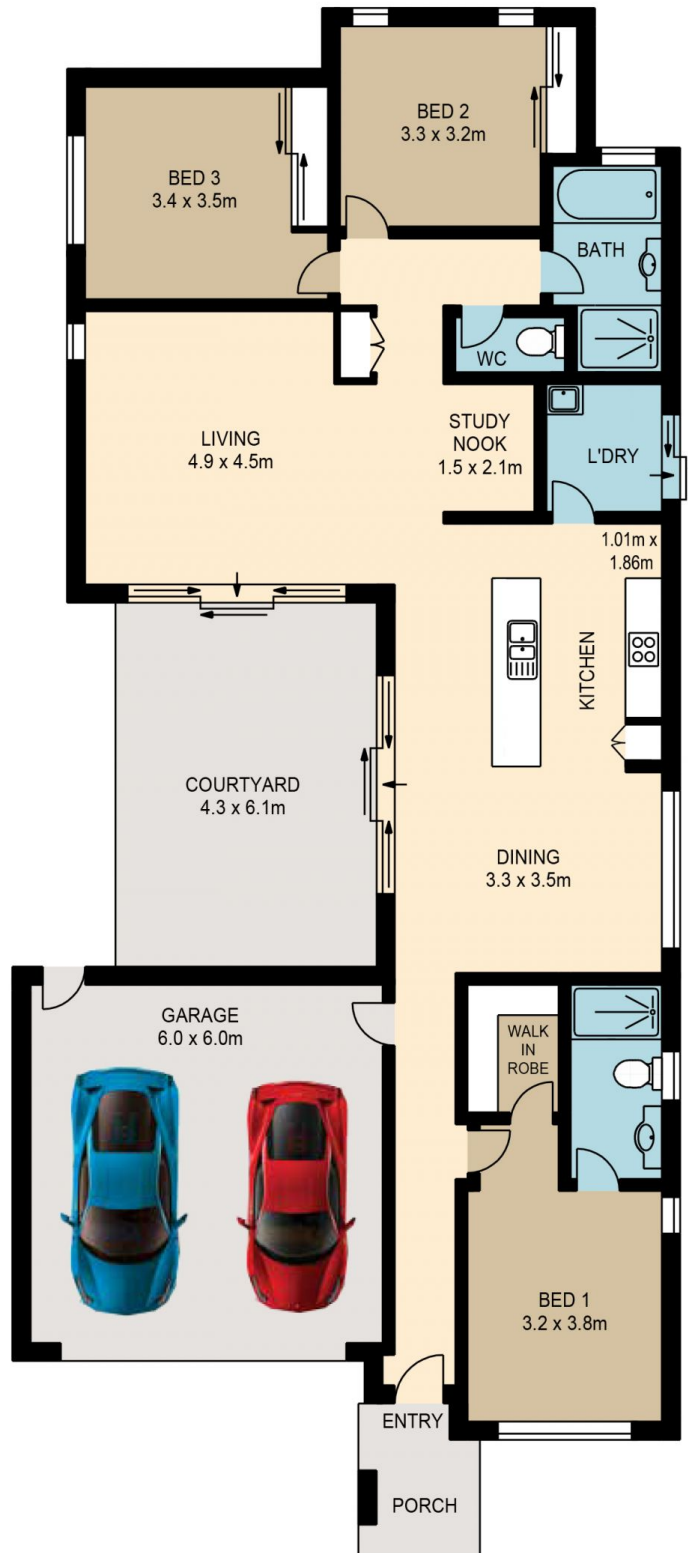
Featuring:

- Central modern kitchen with breakfast bar and dining
- A massive entertaining area flowing from the living and kitchen area

Price : \$ 386,200

Land Size : 375 sqm

View : <https://www.brisbaneboutique.com/sale/qld/pswich-west-moreton/augustine-heights/residential/house/6262627>



PLANS SHOWN ONLY INDICATIVE OF LAYOUT. DIMENSIONS ARE APPROXIMATE.

All information contained herein is gathered from sources we believe to be reliable. However we cannot guarantee its accuracy and interested persons should rely on their own enquiries.

internal external
175sqm 30sqm



47 LEON CAPRA DRIVE

Created by RealScope®
www.realscope.com.au